



12 McLeod Drive Darley VIC

4 3 4

This exciting piece of real estate offers buyers huge potential, while still maintaining the charm of one of the town's most desirable areas, boasting a perfectly positioned block on a massive 701m² (approx.) allotment.

As you walk up the stairs to the property you will be amazed by the stunning area views presenting you to a truly large and amazing family home.

The property comprises of four bedrooms, two with built-in wardrobes, master suite with walk in robe and generous sized ensuite.

The well processed floor plan also makes great use of living space with a formal lounge room, great sized central living area, private oversized theatre/rumpus and potential studio or fourth bedroom.

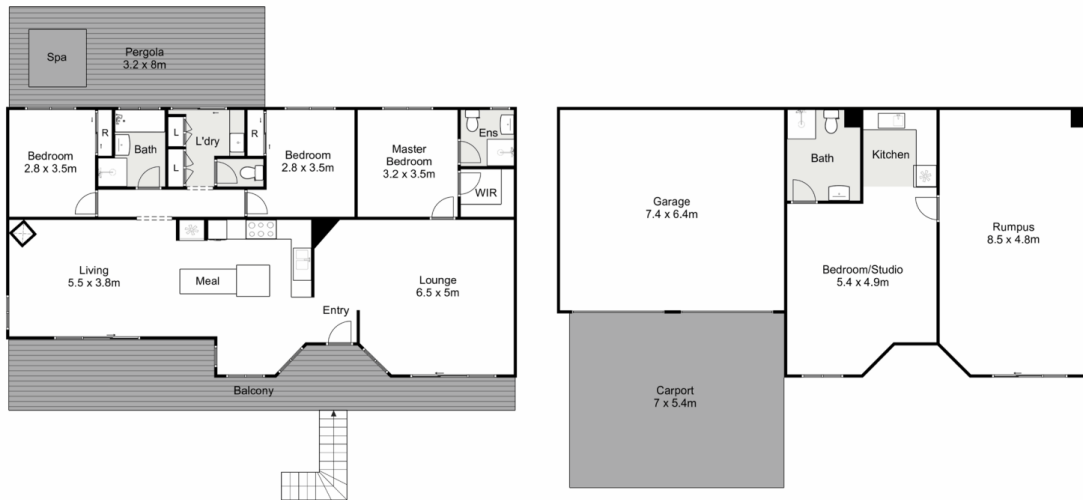
Price : \$ 710,000
Land Size : 701 sqm
View : <https://www.ypa.com.au/7383361>



Shane O'Brien
0431 766 082



Izabel Dusik
0421 833 010



12 McLeod Drive, Darley

YPA

Whilst every attempt has been made to ensure the accuracy of the floor plan contained here, measurements of doors, windows, rooms and any other items are approximate and no responsibility is taken for any error, omission, or mis-statement. This plan is for illustrative purposes only and should be used as such by any prospective purchaser. The services, systems and appliances shown have not been tested and no guarantee as to their operability or efficiency can be given.

