



14 Eden Crescent Hopetoun Park VIC

4 🏠 2 🚿 4 🚗

This luxurious family residence, positioned on a huge allotment of 1.54 acres (approx.) will surpass all expectations.

Made up of quality, space and style this home has all the incredible factors you've been searching for with immaculately landscaped front and rear gardens being the first point to impress.

Entering the residence, you are provided with an impressive prelude of immaculately designed elements, conveying a multitude of entertaining and relaxation areas with a picturesque entertainment space.

Moving through the home, you are greeted by the master suite, completed by a large walk-in wardrobe, full ensuite featuring single vanity, oversized shower and separate

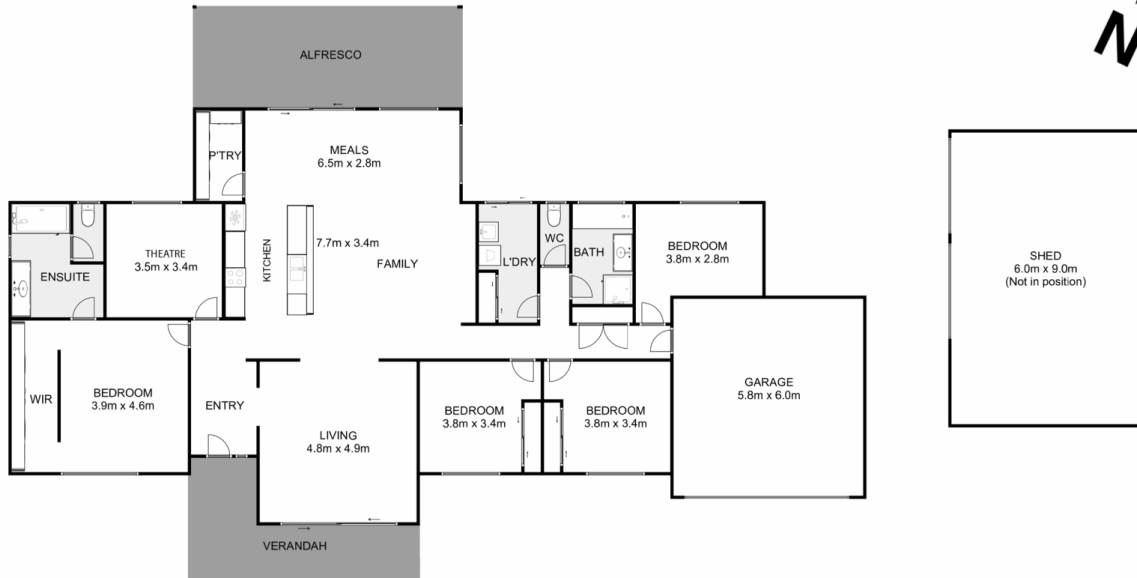
Price : \$ 1,141,000
Land Size : 6241 sqm
View : <https://www.ypa.com.au/7383334>



Shane O'Brien
0431 766 082



Hayley Beri
03 5310 1333



14 Eden Crescent, Hopetoun Park

ypa

Whilst every attempt has been made to ensure the accuracy of the floor plan contained here, measurements of doors, windows, rooms and any other items are approximate and no responsibility is taken for any error, omission, or mis-statement. This plan is for illustrative purposes only and should be used as such by any prospective purchaser. The services, systems and appliances shown have not been tested and no guarantee as to their operability or efficiency can be given.

