



7 Drever Place Maddingley VIC

4  2  2 

This perfect gem is sitting in a great pocket of Maddingley. This home is only 5yrs old and been very well looked after with many extras.

As you enter the home you are greeted with a good size living room which can be closed off for privacy or even for use of a theatre room. The kitchen is in the heart of the home complete with stone benches, ss appliances including 900mm stove and dishwasher, walk in pantry and feature pendant lighting. This opens to the dining and living area with quality laminate flooring and extends out to the alfresco area. The home comprises of four large bedrooms ensuite and WIR to the master with remaining having BIR's. There is a large bathroom and laundry, evaporative cooling and ducted heating, feature lighting and double remote garage with internal access as other extras to the home.

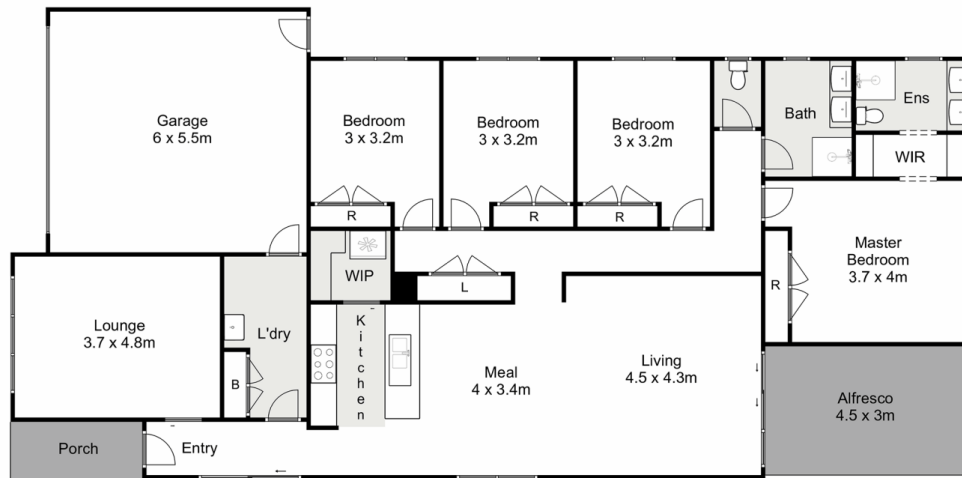
Price : \$ 619,000

Land Size : 400 sqm

View : <https://www.ypa.com.au/7383309>



Jodi Nash
0419 342 120



7 Drever Place, Maddingley

Ypa

Whilst every attempt has been made to ensure the accuracy of the floor plan contained here, measurements of doors, windows, rooms and any other items are approximate and no responsibility is taken for any error, omission, or mis-statement. This plan is for illustrative purposes only and should be used as such by any prospective purchaser. The services, systems and appliances shown have not been tested and no guarantee as to their operability or efficiency can be given.

