



1 Medway Court Darley VIC

3  2  2 

Displaying impressive Views over Darley and having unique features whilst retaining a seamless contemporary style and functionality, this home makes for a great family domain located in one of Darley's most desirable areas.

This wonderful home comprises of three generously sized bedrooms, master bedroom with ensuite and WIR, as well as a front formal lounge room providing plenty of space for the whole family.

The kitchen, meals and large living area flow seamlessly out to your very own pergola / alfresco entertaining area, surrounded by gardens and ample space for year round entertaining.

Special features include: Ducted heating & cooling, double car garage, brand new carpet, freshly painted, New hot water service, all sitting comfortably on a massive 1035m2

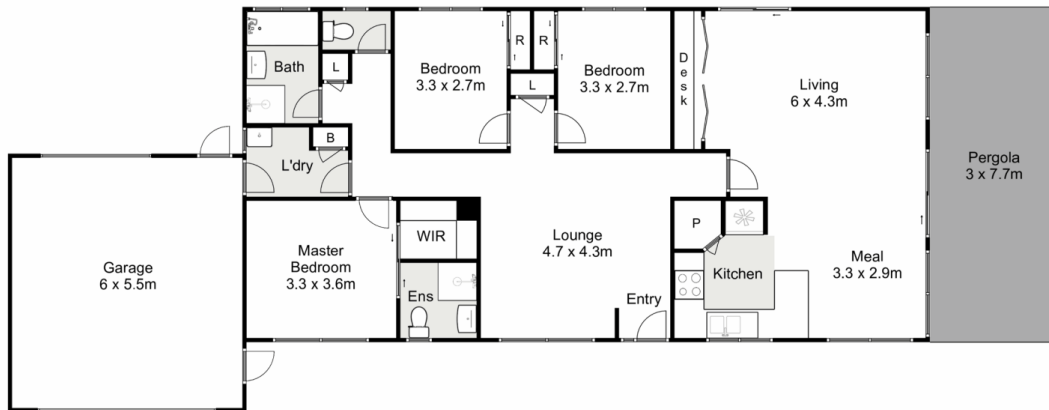
Price : \$ 550,000

Land Size : 1035 sqm

View : <https://www.ypa.com.au/7383308>



Jodi Nash
0419 342 120



1 Medway Court, Darley



Whilst every attempt has been made to ensure the accuracy of the floor plan contained here, measurements of doors, windows, rooms and any other items are approximate and no responsibility is taken for any error, omission, or mis-statement. This plan is for illustrative purposes only and should be used as such by any prospective purchaser. The services, systems and appliances shown have not been tested and no guarantee as to their operability or efficiency can be given.

