



3 Fourth Mews Maddingley VIC

3 2 2

This great property is positioned in the highly sought-after Hill View Estate offers high quality finishes in a well maintained abode. This fantastic home offers a family friendly plan on a large block of 824m2 (approx.)

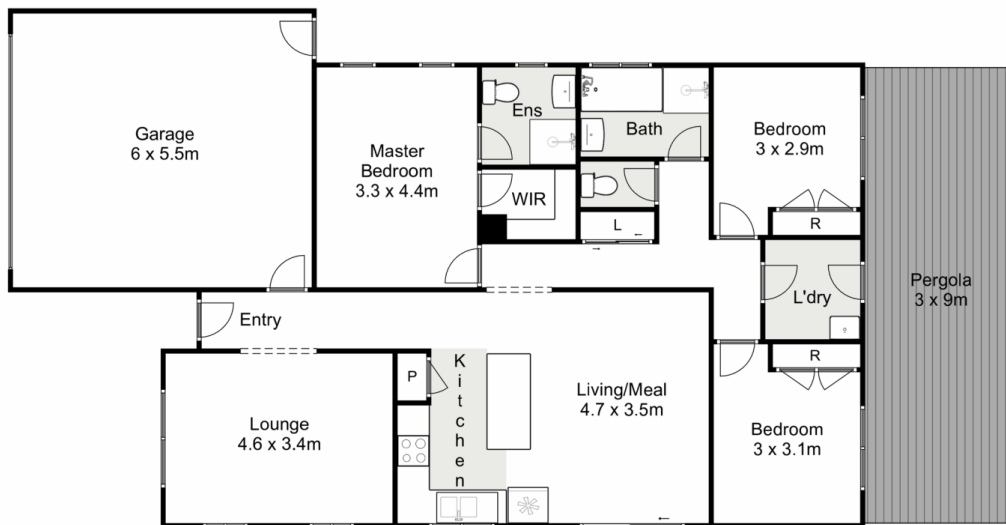
Price : \$ 530,000
Land Size : 825 sqm
View : <https://www.ypa.com.au/7383301>

This immaculately presented home comprises of three generous sized bedrooms, a master bedroom suite features a large walk in wardrobe and a large ensuite, the main central bathroom mimics the same level of openness and light.



Lucas Ekerbicer
0418 465 892

The spacious front lounge area of this home compliments the functional design, while the open kitchen and meals area serve as welcoming heart of the home. The kitchen offers plenty of bench space and storage for all needs, finished with high quality stainless steel appliances.



3 Fourth Mews, Maddingley

Ypa

Whilst every attempt has been made to ensure the accuracy of the floor plan contained here, measurements of doors, windows, rooms and any other items are approximate and no responsibility is taken for any error, omission, or mis-statement. This plan is for illustrative purposes only and should be used as such by any prospective purchaser. The services, systems and appliances shown have not been tested and no guarantee as to their operability or efficiency can be given.

