



45 Tandara Circuit Melton West VIC

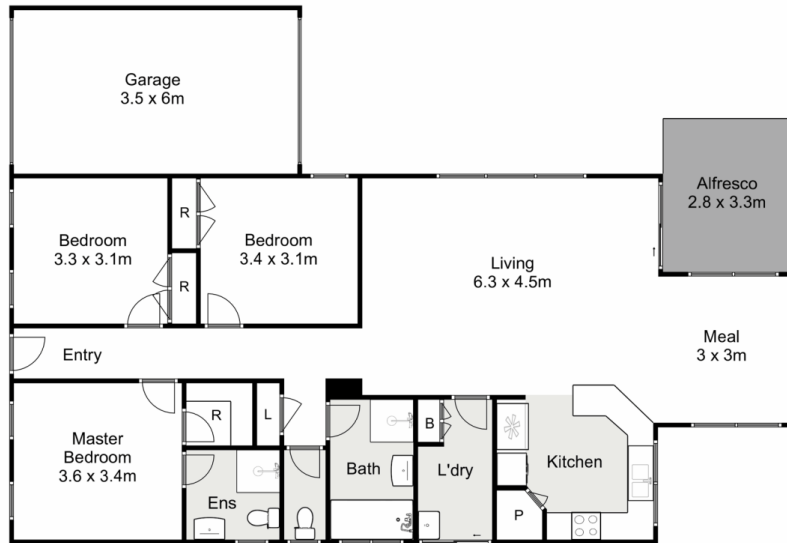
3  2  1 

Strategically positioned within schools zones, parks and walking distance to the Woodgrove Shopping Centre. This immaculate home has been carefully designed providing for an ideal lifestyle with all the conveniences and comfort for family living. Internally, the attention to detail is clear to see with the benefit of quality fixtures and fittings on great size allotment of 581m². Spacious throughout the home comprises of three bedrooms master with WIR and ensuite, with built in robes in remaining, ducted heating, evaporative cooling, formal lounge and an open plan meals living area perfect for a growing family. The central hub of the home consists of a well-designed central kitchen equipped with stainless steel appliances including wall oven. Outside is a patio area and huge backyard with potential side access. Extras include central bathroom, laundry, single garage with drive through access plus much more. This home won't last long....

Price : \$ 495,000
Land Size : 581 sqm
View : <https://www.ypa.com.au/7383296>



Jodi Nash
0419 342 120



45 Tandara Circuit, Melton West

Ypa

Whilst every attempt has been made to ensure the accuracy of the floor plan contained here, measurements of doors, windows, rooms and any other items are approximate and no responsibility is taken for any error, omission, or mis-statement. This plan is for illustrative purposes only and should be used as such by any prospective purchaser. The services, systems and appliances shown have not been tested and no guarantee as to their operability or efficiency can be given.

