

72 Wellington Street Darley VIC

3  1  2 

Displaying an impressive blend of captivating and unique features whilst retaining a seamless contemporary style and functionality on an 824m² (approx.) allotment, this beautifully designed home makes for a sensational first home buyers or investments domain located within walking distance to Schools, IGA Supermarket, Darley Park and a short drive to Bacchus Marsh Township.

This wonderful home comprises of three generously sized bedrooms, immaculately renovated and kept central bathroom as well as a large lounge room providing plenty of space for the whole family. Stunning kitchen which updated cabinetry, gas cooktop and oven, dishwasher and ample bench and storage space.

Lounge area flows seamlessly out to your very own enclosed alfresco entertaining area, surrounded by low

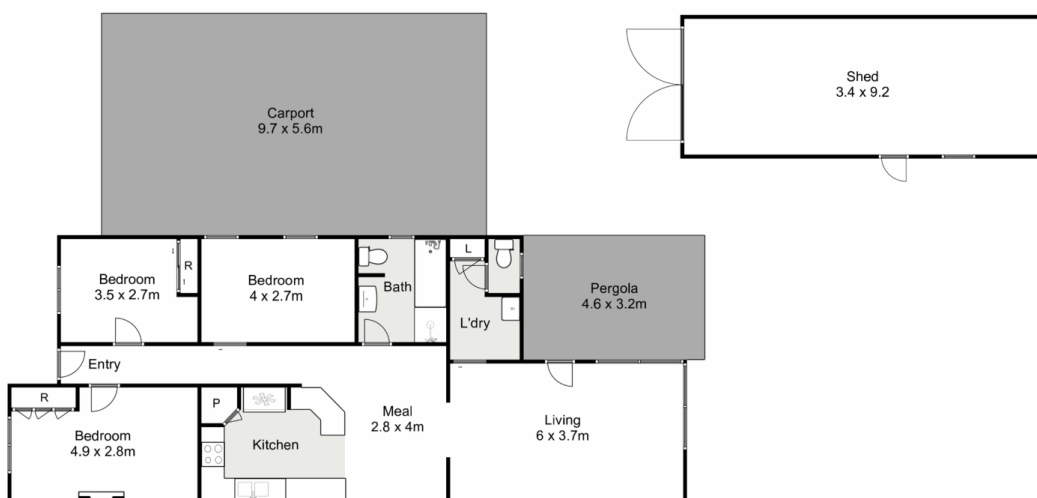
Price : \$ 545,000
Land Size : 824 sqm
View : <https://www.ypa.com.au/7383293>



Shane O'Brien
0431 766 082



Hayley Beri
03 5310 1333



72 Wellington Street, Darley

Ypa

Whilst every attempt has been made to ensure the accuracy of the floor plan contained here, measurements of doors, windows, rooms and any other items are approximate and no responsibility is taken for any error, omission, or mis-statement. This plan is for illustrative purposes only and should be used as such by any prospective purchaser. The services, systems and appliances shown have not been tested and no guarantee as to their operability or efficiency can be given.

