

29 Drever Place Maddingley VIC

5 🛏 4 🚿 2 🚗

This picture perfect Hampton inspired home has it all.

The home consist of 5 bedrooms, 3 with full ensuites, all with walk in robes, master bedroom with its own alfresco area. Kitchen is a chefs delight Miele dishwasher, stand-alone 900ml Smeg oven and AEG wall mounted double oven 600ml and microwave stacker set in the walking pantry, the highest quality throughout the home with 40mm stone benches, white cabinetry, dishwasher and so much more.

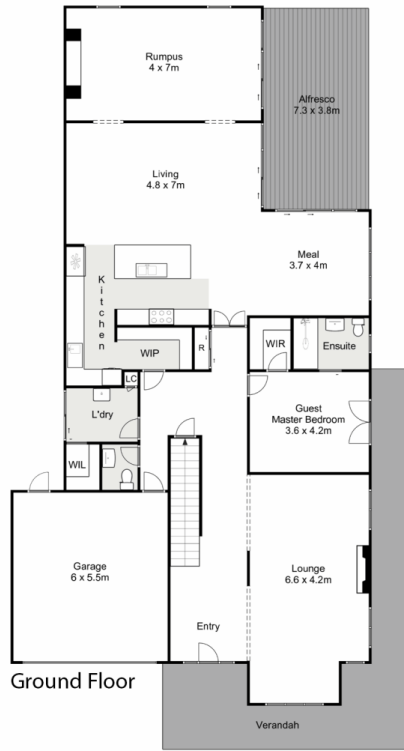
This beautiful family home offers 4 living zones, study area other feature are quality flooring, window dressings and ducted heating, ducted refrigerated cooling

Outside there is a decked alfresco area with ceiling fans, garden shed and manicured gardens. Set on a 739m2

Price : \$ 985,000
Land Size : 739 sqm
View : <https://www.ypa.com.au/7383288>



Vickie Ramon
0403 194 621



29 Drever Place, Maddingley

ypa

Whilst every attempt has been made to ensure the accuracy of the floor plan contained here, measurements of doors, windows, rooms and any other items are approximate and no responsibility is taken for any error, omission, or mis-statement. This plan is for illustrative purposes only and should be used as such by any prospective purchaser. The services, systems and appliances shown have not been tested and no guarantee as to their operability or efficiency can be given.

