



33 College Square Bacchus Marsh VIC

4 2 2

Situated on a great 526m² (approx.) this exquisite home is positioned in a great pocket, a perfect example of modern-day real estate, this home includes finishes of the highest quality and offers the purchasers extras and upgrades that simply must be seen to be believed.

This wonderful home comprises of four bedrooms all with built in robes with the master bedroom equipped with full walk-in robe and ensuite, remaining bedrooms are serviced by the light filled main bathroom that mirrors this same level of quality.

Featuring an open modern kitchen equipped with 900mm stainless steel appliances and ample amounts of cupboard and bench space, open meals area are accompanied by a living/ rumpus room and a front formal lounge making plenty of space for the family.

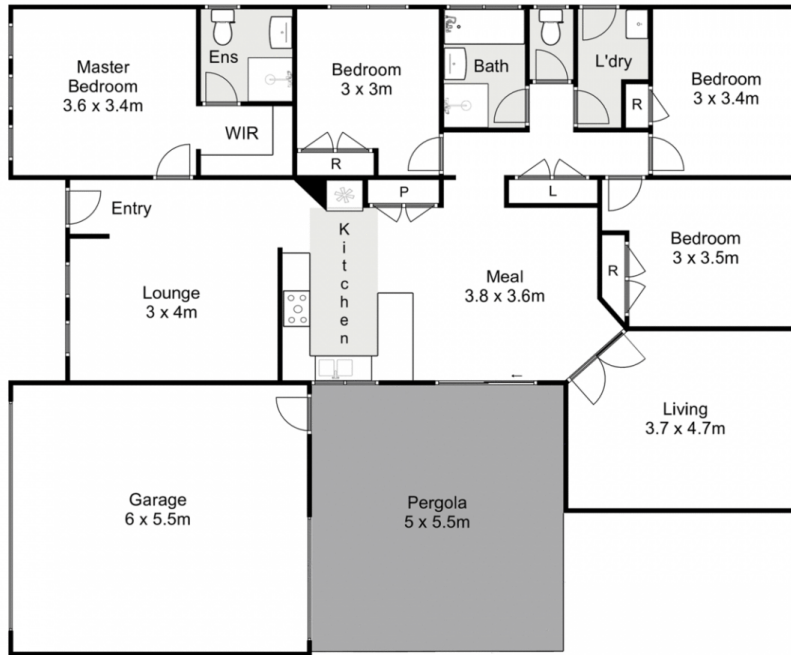
Price : \$ 578,750
Land Size : 526 sqm
View : <https://www.ypa.com.au/7383284>



Shane O'Brien
0431 766 082



Hayley Beri
03 5310 1333



33 College Square, Bacchus Marsh

every attempt has been made to ensure the accuracy of the floor plan contained here, measurements of doors, windows, rooms and any other items are approximate and no responsibility is taken for any error, omission, or mis-statement. an is for illustrative purposes only and should be used as such by any prospective purchaser. The services, systems and appliances shown have not been tested and no guarantee as to their operability or efficiency can be given.

