



## 18 St Andrews Way Darley VIC

3 2 2

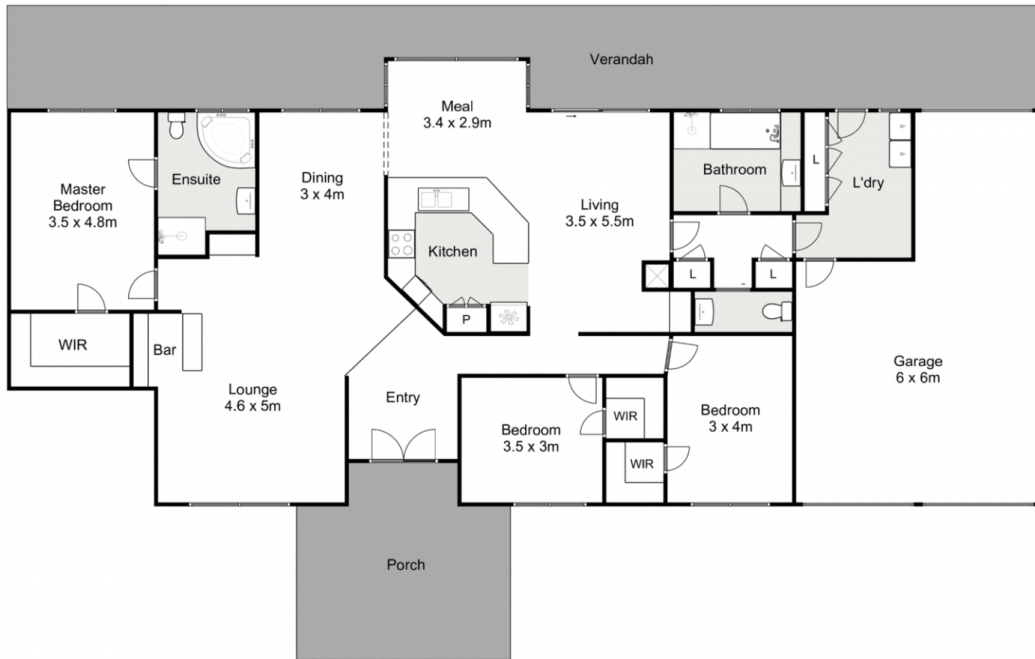
This family home is situated in the most stunning location on a 1,146m<sup>2</sup> (approx.) allotment, with the Darley Golf Club directly in front and uninterrupted views of the Lerderberg Gorge and State Park behind. As you walk through the door of this house you immediately feel at home. The light filled rooms and warm textures throughout make for a cozy ambience with views of the hills and surrounds that are picturesque.

Upon entry you are greeted by a wide hall leading to a traditional loungeroom with built in bar and formal dining. The property consists of three bedrooms, master with sliding door access to the backyard, substantial walk-in robe, en-suite fitted with spa bath and 1200mm shower. The remaining bedrooms are of a good size with beautiful large windows and walk-in robes. The central bathroom is equipped with a deep bath, shower and separate toilet with basin which is easily accessible to the outdoor entertaining

**Price** : \$ 886,000  
**Land Size** : 1146 sqm  
**View** : <https://www.ypa.com.au/7383250>



**Jodi Nash**  
0419 342 120



## 18 St Andrews Way, Darley



every attempt has been made to ensure the accuracy of the floor plan contained here, measurements of doors, windows, rooms and any other items are approximate and no responsibility is taken for any error, omission, or mis-statement. an is for illustrative purposes only and should be used as such by any prospective purchaser. The services, systems and appliances shown have not been tested and no guarantee as to their operability or efficiency can be given.

