



## 9 Peter Pan Place Bacchus Marsh VIC

4 2 2

Set in a quiet court location this comfortable family home with four bedrooms is just what you've been looking for.

Comprising of four good sized bedrooms master equipped with walk in robe and great sized ensuite whilst remaining bedrooms having built in robes all serviced by a light filled central bathroom.

Kitchen has ample cupboard and bench space complete with granite bench tops, a 900mm gas cook top, oven, range hood, dishwasher and adjoining meals area.

A large lounge to the front of the home with plenty of space for the whole family.

Stepping outside you are greeted to an enormous outdoor entertaining area overlooking the spacious 855m<sup>2</sup>

**Price** : \$ 600,000

**Land Size** : 780 sqm

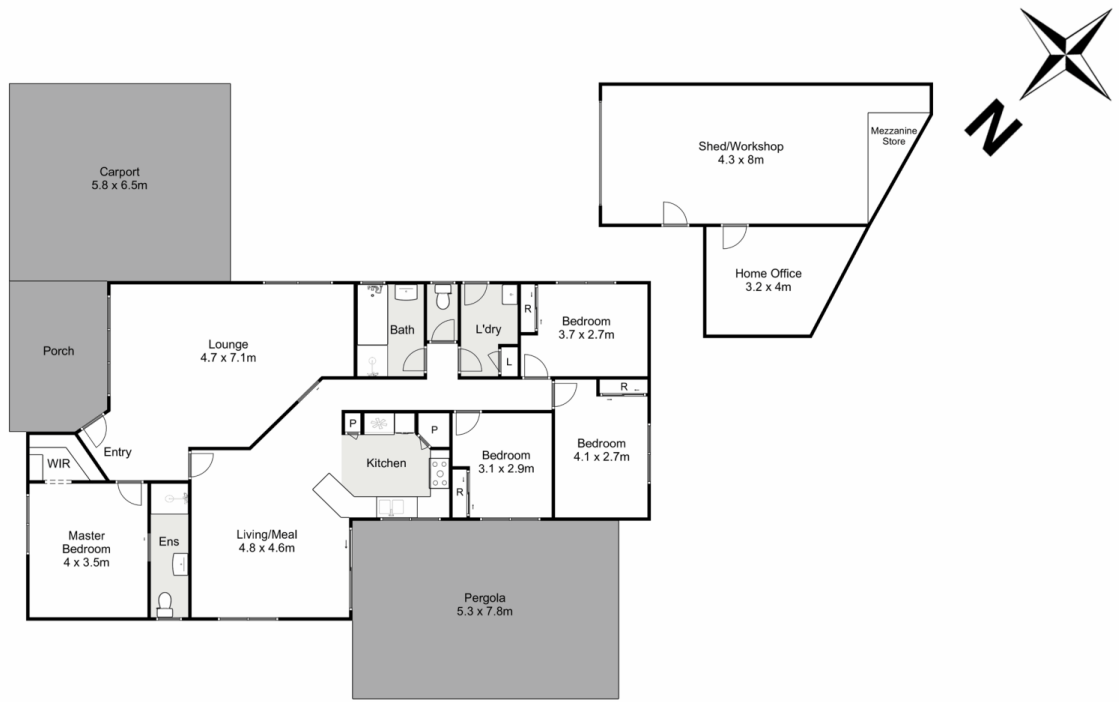
**View** : <https://www.ypa.com.au/7383249>



**Shane O'Brien**  
0431 766 082



**Hayley Beri**  
03 5310 1333



## 9 Peter Pan Place, Bacchus Marsh

ypa

Whilst every attempt has been made to ensure the accuracy of the floor plan contained here, measurements of doors, windows, rooms and any other items are approximate and no responsibility is taken for any error, omission, or mis-statement. This plan is for illustrative purposes only and should be used as such by any prospective purchaser. The services, systems and appliances shown have not been tested and no guarantee as to their operability or efficiency can be given.

