

1A Nathan Drive Darley VIC

3  2  1 

The modern interior of this three-bedroom home is incredibly stylish and ideally low maintenance.

The home offers a contemporary façade, 3 Bedrooms with BIR's master having ensuite and WIR, an open plan family living area, a modern well-appointed kitchen with stone benchtops and upgraded cabinetry, stainless steel appliances, and a dishwasher.

Sited on an easily maintainable 319sqm (approx.) with a grassed area and good sized uncover patio with built in timber seating. The home also offers a safe and secure front and rear yard with good fencing.

A convenient location caps it all off, handy to a park, oval, public transport, and a choice of quality schools, medical centre and supermarket.

Price : \$ 495,000

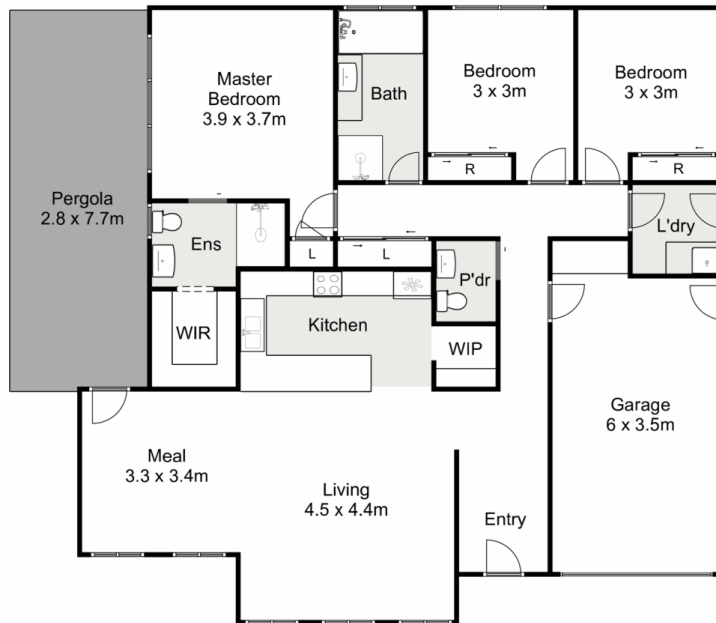
Land Size : 319 sqm

View : <https://www.ypa.com.au/7383220>



Jodi Nash
0419 342 120

Book today for a private appointment to avoid disappointment.



1A Nathan Drive, Darley

Ypa

Whilst every attempt has been made to ensure the accuracy of the floor plan contained here, measurements of doors, windows, rooms and any other items are approximate and no responsibility is taken for any error, omission, or mis-statement. This plan is for illustrative purposes only and should be used as such by any prospective purchaser. The services, systems and appliances shown have not been tested and no guarantee as to their operability or efficiency can be given.

