

24 Cromarty Circuit Darley VIC

4  2  2 

Precision in design and impacting wow factor are the first impressions in this amazing 4 bedroom home situated in popular Darley. This impressive residence showcases elegance and sophistication, yet has a practical design for family entertainment and living. Features include 4 bedrooms all with built in robes, main with ensuite, meals/family room, ducted heating, split system cooling, dishwasher, kitchen with stone benches, low maintenance gardens, deck area for all your outdoor living, situated on a 435m2 allotment (approx.) you'll never want to leave your private oasis. An inspection will not disappoint.

(Photo ID is Required at all Open For Inspections)

At YPA Bacchus Marsh "Our Service Will Move You"

DISCLAIMER: Every precaution has been taken to

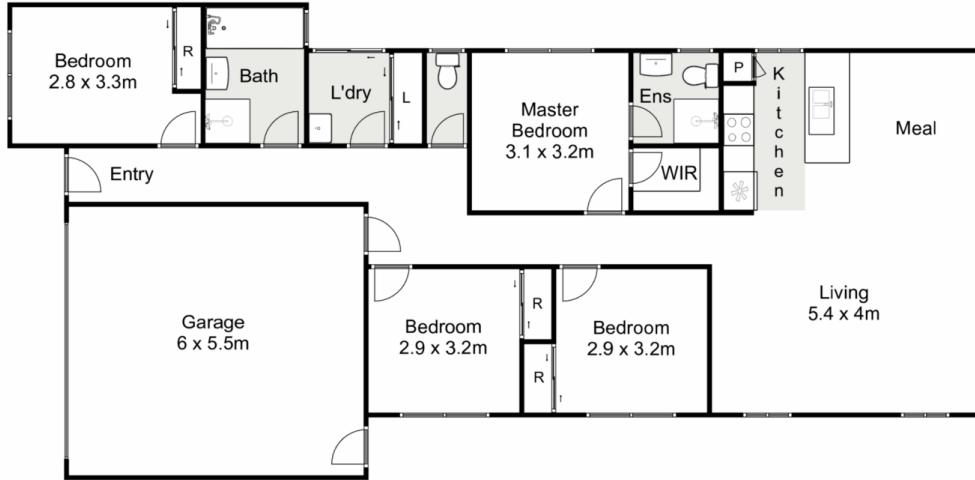
Price : \$ 545,000
Land Size : 435 sqm
View : <https://www.ypa.com.au/7383200>



Vickie Ramon
0403 194 621



Lucas Ekerbicer
0418 465 892



24 Cromarty Circuit, Darley

Ypa

Whilst every attempt has been made to ensure the accuracy of the floor plan contained here, measurements of doors, windows, rooms and any other items are approximate and no responsibility is taken for any error, omission, or mis-statement. This plan is for illustrative purposes only and should be used as such by any prospective purchaser. The services, systems and appliances shown have not been tested and no guarantee as to their operability or efficiency can be given.

