



85 Westlake Drive Melton West VIC

3  2  2 

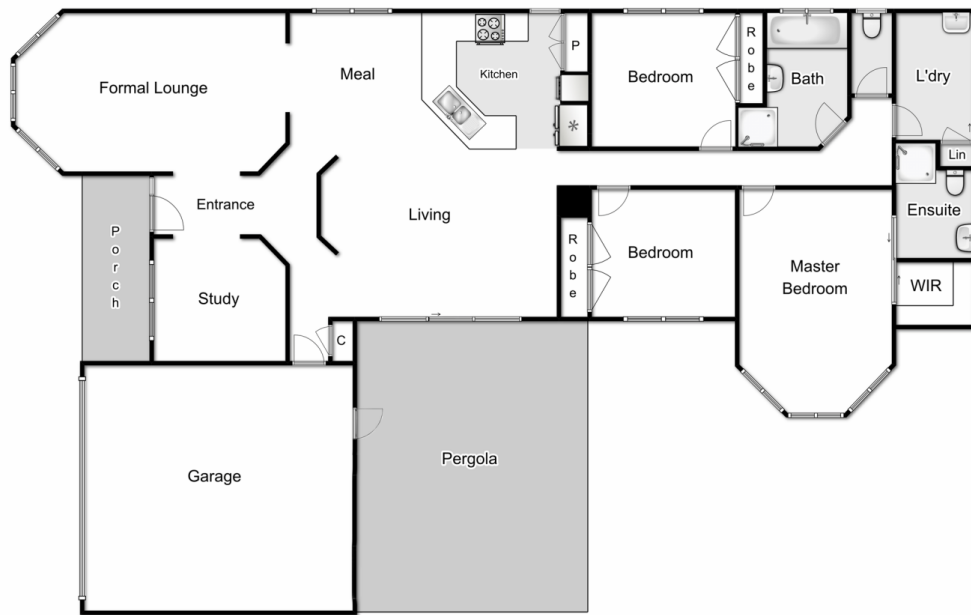
Displaying an impressive blend of captivating modern features and contemporary style, the generous proportions of this home make for a sensational family domain, positioned in the private Westlake Estate on a massive 612m² (approx.) block of land, the quality of this home will astound you.

This home offers glamorous ambience throughout in combination with the finest upgrades, makes this a fantastic value for your money. Comprising of three generous bedrooms, two bathrooms, master bedroom with walk in robe, en-suite and bay view windows, a separate front formal lounge allows plenty of room for the whole family, while the open plan meals and central living area both seamlessly flow to the beautiful kitchen, which not only appeals aesthetically but boasts a long list of upgrades including, high-quality appliances, plenty of storage space and much more, making it worthy to be named the heart of

Price : \$ 495,000
Land Size : 613 sqm
View : <https://www.ypa.com.au/7383198>



Shane O'Brien
0431 766 082



85 Westlake Drive, Melton West

YPA

Whilst every attempt has been made to ensure the accuracy of the floor plan contained here, measurements of doors, windows, rooms and any other items are approximate and no responsibility is taken for any error, omission, or mis-statement. This plan is for illustrative purposes only and should be used as such by any prospective purchaser. The services, systems and appliances shown have not been tested and no guarantee as to their operability or efficiency can be given.

