



## 63 Darcy Street Maddingley VIC

4 2 2

This example of modern-day real estate positioned in the highly sought-after Hill View Estate includes finishes of the highest quality and offers the purchasers extras and upgrades that simply must be seen to be believed. This fantastic home offers an open family friendly plan on a large block of 550m<sup>2</sup> (approx.)

This immaculately presented home comprises of four generous sized bedrooms, a master bedroom suite features a large walk in wardrobe that flows into a large ensuite.

The spacious first central lounge area of this home compliments the open plan design, while the second living room is separated by the open kitchen and meals area.

The kitchen offers plenty of bench space and storage for all needs, finished with high quality stainless steel appliances. Stepping outside you are greeted to an outdoor entertaining area to suit year round entertaining and

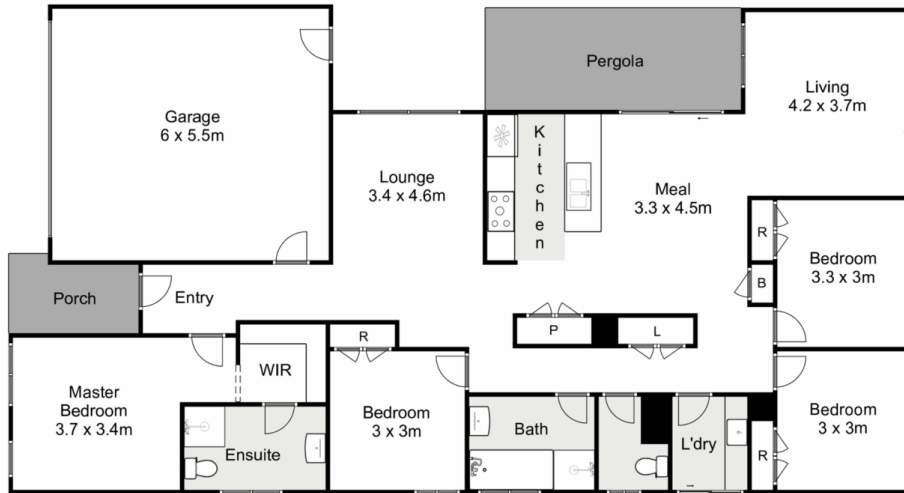
**Price** : \$ 517,000  
**Land Size** : 550 sqm  
**View** : <https://www.ypa.com.au/7383194>



**Shane O'Brien**  
0431 766 082



**Monika Davies**  
0404 587 377



## 63 Darcy Street, Maddingley

YPA

Whilst every attempt has been made to ensure the accuracy of the floor plan contained here, measurements of doors, windows, rooms and any other items are approximate and no responsibility is taken for any error, omission, or mis-statement. This plan is for illustrative purposes only and should be used as such by any prospective purchaser. The services, systems and appliances shown have not been tested and no guarantee as to their operability or efficiency can be given.

