



12 Powlett Street Maddingley VIC

3  2  2 

This exciting piece of real estate offers buyers amazing potential, while still maintaining the signature charm of one of the town's most desirable areas, boasting a perfectly positioned block on a massive 905m² (approx.) allotment.

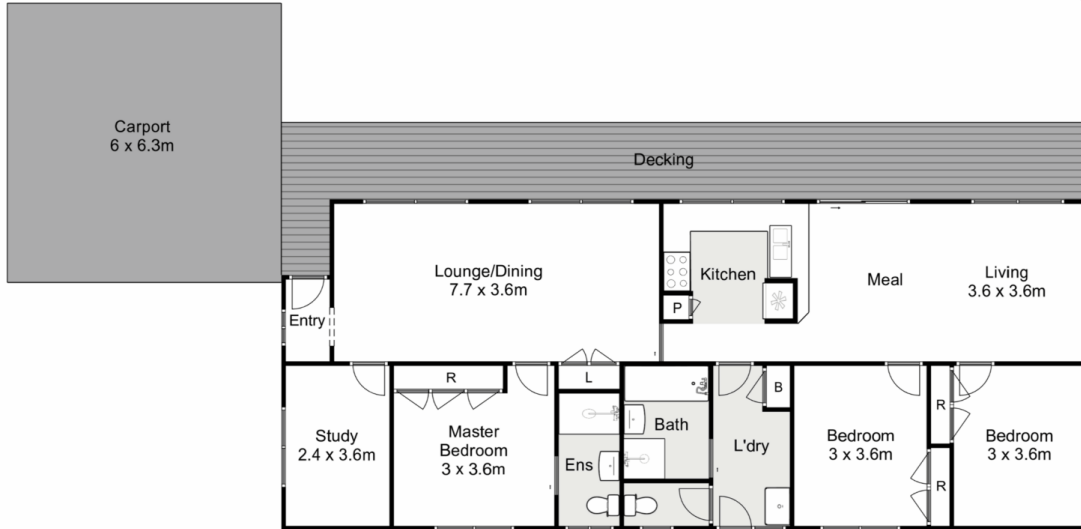
As you enter this immaculately maintained property, you are greeted by a spacious lounge room with adjoined dining space, a large study at the front of the home, as well as the home's master bedroom outfitted with plenty of wardrobe space as well as an ensuite.

The second half of the home includes a fully equipped kitchen with ample storage and well looked after appliances, as well as a second meals and living area, creating plenty of room for the whole family, also featuring two more bedrooms and a central bathroom.

Land Size : 905 sqm
View : <https://www.ypa.com.au/7383192>



Lucas Ekerbicer
0418 465 892



12 Powlett Street, Maddingley

ypa

Whilst every attempt has been made to ensure the accuracy of the floor plan contained here, measurements of doors, windows, rooms and any other items are approximate and no responsibility is taken for any error, omission, or mis-statement. This plan is for illustrative purposes only and should be used as such by any prospective purchaser. The services, systems and appliances shown have not been tested and no guarantee as to their operability or efficiency can be given.

