

59 McLachlan Street Bacchus Marsh VIC

3  2  2 

This unique modern-day 2yr old home, boasting high-end finishes and spectacular views that must be seen to be believed.

This wonderful home comprises of three bedrooms, two with built in robes and the master equipped with walk in robe and ensuite, with access to the alfresco area. There is also an open study and second living area to front of home. A modern centrally located kitchen with ss appliances including dishwasher and stone bench tops, overlooking a spacious family and meals area adjoined by sliding doors with access leading to the alfresco area making it easy for inside/outside living. There is a large grassed backyard with low maintenance garden beds and is very private with neighbours to only one side.

Extras including ducted heating/cooling, double garage with internal access, stone bench tops throughout, high ceilings and doors.

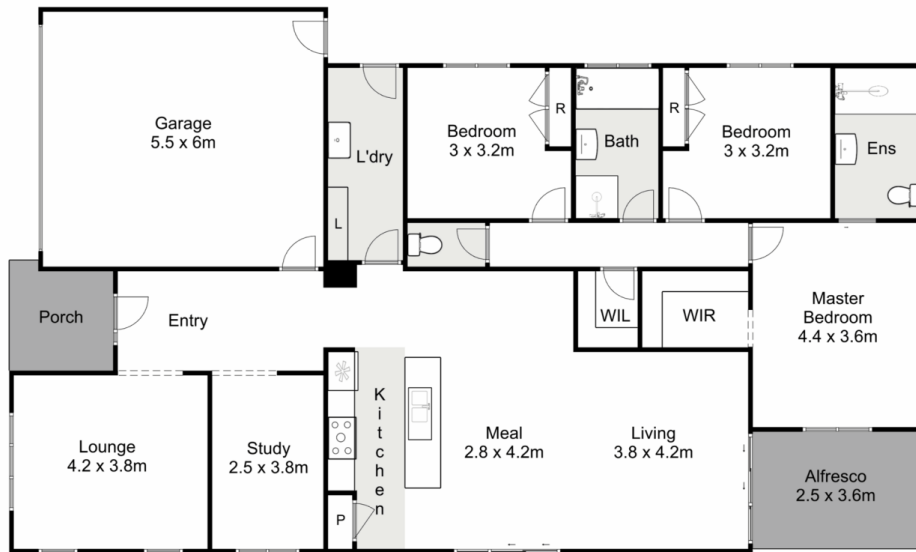
Price : \$ 577,000

Land Size : 563 sqm

View : <https://www.ypa.com.au/7383185>



Jodi Nash
0419 342 120



59 McLachlan Street, Bacchus Marsh

YPA

Whilst every attempt has been made to ensure the accuracy of the floor plan contained here, measurements of doors, windows, rooms and any other items are approximate and no responsibility is taken for any error, omission, or mis-statement. This plan is for illustrative purposes only and should be used as such by any prospective purchaser. The services, systems and appliances shown have not been tested and no guarantee as to their operability or efficiency can be given.

