



20 Harvey Street Darley VIC

3 1 2

Situated in central Darley sits this charming home, with established gardens and a single carport out front. Upon entry, you are welcomed by a cozy lounge area which leads to three bedrooms all with built in robes which are serviced by a central bathroom. The home is also fitted with ducted heating and evaporative cooling for year-round comfort. The renovated kitchen is the heart of the home, consisting of beautiful cabinetry and benches, a 900mm oven, stainless steel dishwasher and a double sink overlooking back yard.

Stepping outside you are treated to concreted patio area with built in fire pit as well as a spacious lawn area and two sheds to the side of the property. The large 667m² (approx.) block is positioned perfectly with freeway access close by and local schools, doctors' clinics, and Darley Plaza all within walking distance.

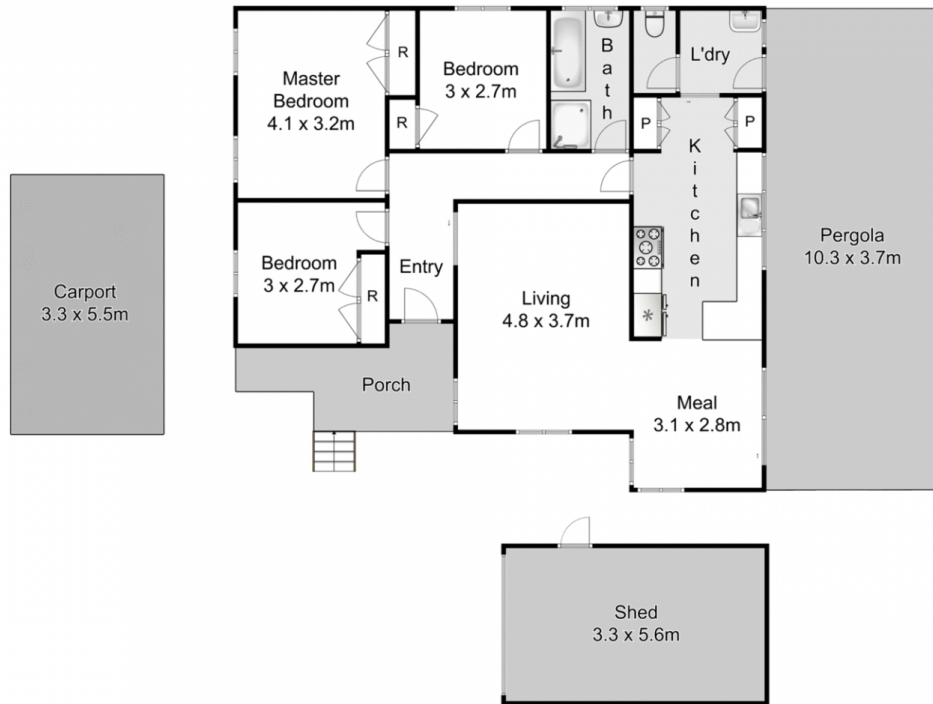
Price : \$ 487,000

Land Size : 668 sqm

View : <https://www.ypa.com.au/7383184>



Jodi Nash
0419 342 120



20 Harvey Street, Darley



every attempt has been made to ensure the accuracy of the floor plan contained here, measurements of doors, windows, rooms and any other items are approximate and no responsibility is taken for any error, omission, or mis-statement. an is for illustrative purposes only and should be used as such by any prospective purchaser. The services, systems and appliances shown have not been tested and no guarantee as to their operability or efficiency can be given.

