



ypa



15 McFarland Street Bacchus Marsh VIC

3 1 1

Situated in the heart of Bacchus Marsh, you need to be quick to secure this perfectly positioned home located within prime access to main street shopping, schools & all amenities. On a rare 836m² (approx.) block, with potential for subdivision (STCA), this 3 bedroom home is certainly one not too miss.

Featuring good sized bedrooms, large living and meals spaces, central kitchen and separate bathroom, all with monumental potential to renovate and create a dream home in a priceless location!

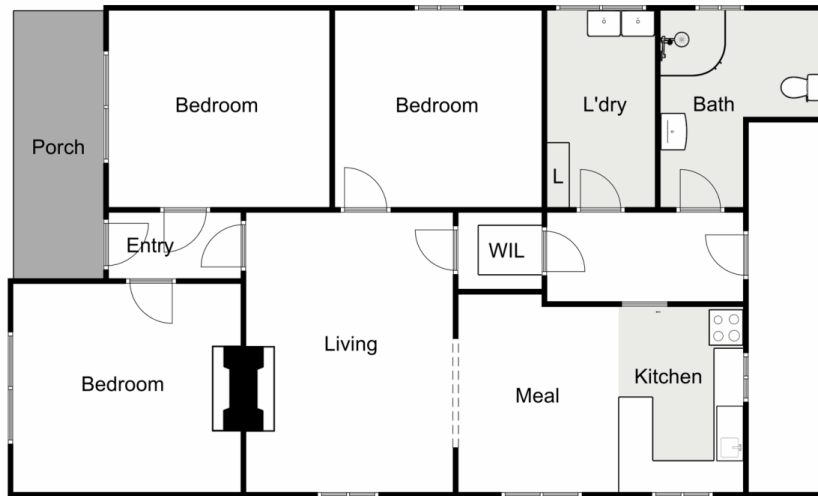
Clear side access opens up to your single car shed and remaining backyard.

The superb low maintenance setting is an ideal place to create what could possibly be a forever home, all these

Price : \$ 470,500
Land Size : 836 sqm
View : <https://www.ypa.com.au/7383179>



Lucas Ekerbicer
0418 465 892



15 McFarland Street, Bacchus Marsh



Whilst every attempt has been made to ensure the accuracy of the floor plan contained here, measurements of doors, windows, rooms and any other items are approximate and no responsibility is taken for any error, omission, or mis-statement. This plan is for illustrative purposes only and should be used as such by any prospective purchaser. The services, systems and appliances shown have not been tested and no guarantee as to their operability or efficiency can be given.

