



## 36 Curlew Close Melton VIC

4 1 2

Situated in the popular Central Melton, this home has everything to offer! Starting with a large allotment of approximately 586m<sup>2</sup>, the home has ideal space for the growing family. Also offered, are four bedrooms, central bathroom a meals area with plenty of natural light. Kitchen has been renovated with gas cooking and plenty of cupboards and bench space, large rumpus room, spilt system and ceiling fans, plenty of backyard truly helps tick all the boxes! Within close walking proximity, schools, shops Melton waves and Woodgrove Shopping Centre also nearby. Don't Delay, Enquire today!

**Price** : \$ 390,000  
**Land Size** : 586 sqm  
**View** : <https://www.ypa.com.au/7383175>

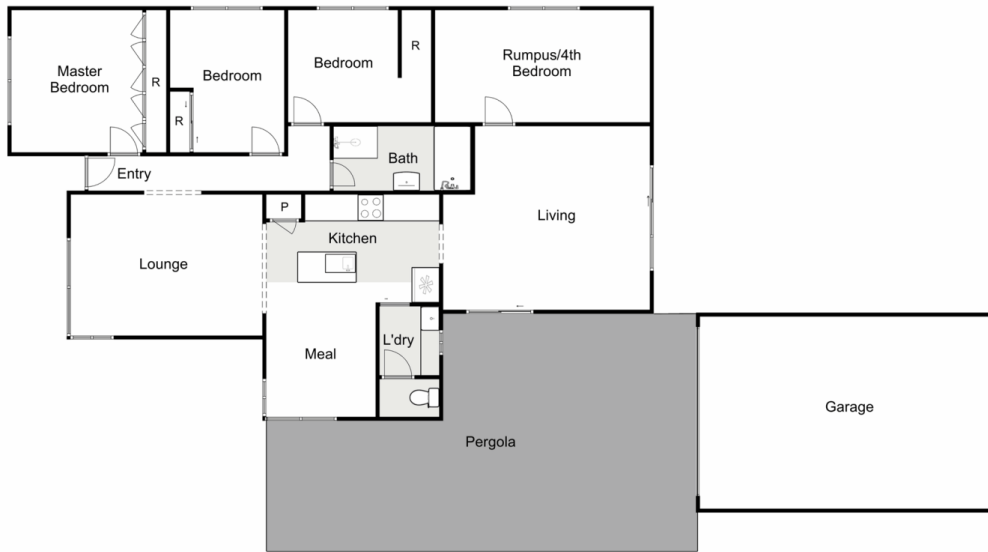
(Photo ID is Required at all Open For Inspections)

At YPA Bacchus Marsh "Our Service Will Move You"

DISCLAIMER: Every precaution has been taken to



**Vickie Ramon**  
**0403 194 621**



## 36 Curlew Close, Melton

Ypa

Whilst every attempt has been made to ensure the accuracy of the floor plan contained here, measurements of doors, windows, rooms and any other items are approximate and no responsibility is taken for any error, omission, or mis-statement. This plan is for illustrative purposes only and should be used as such by any prospective purchaser. The services, systems and appliances shown have not been tested and no guarantee as to their operability or efficiency can be given.

