



## 12 Hartog Grove Darley VIC

4  2  2 

Located in the highly sought after Grantleigh Estate sits this magnificent family home on an approximately 762sqm (approx.) block. Meticulously cared for and loved by its current owners, there is nothing to be done, except move in and enjoy.

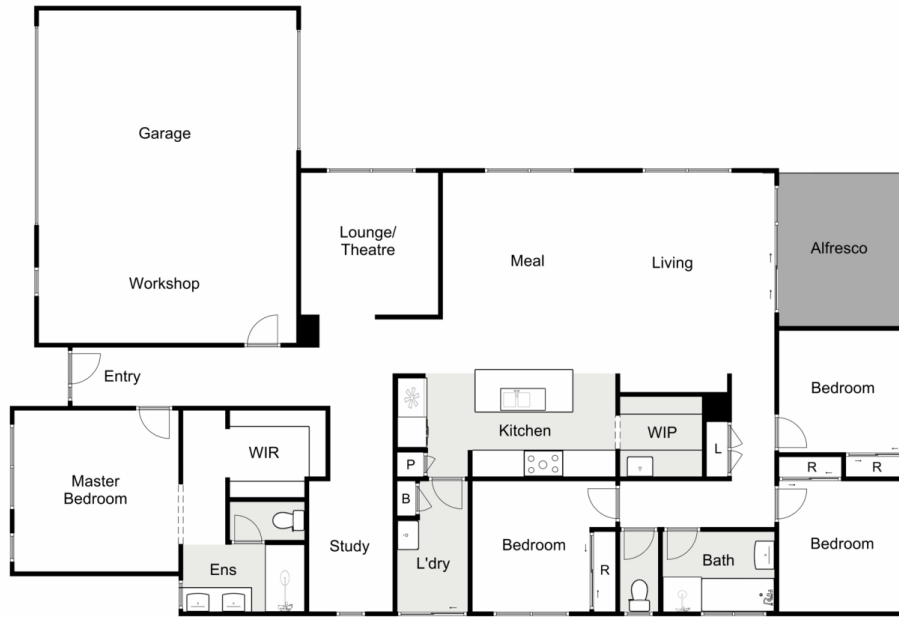
Upon entry, you are welcomed by high ceilings, offering an amazing sense of space and luxury. As you navigate seamlessly through this functional floorplan, you will notice the quality in even the finest details, whether it be the wide hallways to the upgraded cabinetry in the kitchen, there is simply nothing that hasn't been thought of.

The master suite includes a large walk in wardrobe with adjacent ensuite fitted to the definition of opulence, stone benchtops, two vanities and a double shower with tiled shower base and wall niche, the central bathroom encapsulates this same feel, while the remaining three bedrooms are all great sized with built in robes.

**Price** : \$ 739,000  
**Land Size** : 762 sqm  
**View** : <https://www.ypa.com.au/7383165>



**Shane O'Brien**  
0431 766 082



## 12 Hartog Grove, Darley

Ypa

Whilst every attempt has been made to ensure the accuracy of the floor plan contained here, measurements of doors, windows, rooms and any other items are approximate and no responsibility is taken for any error, omission, or mis-statement. This plan is for illustrative purposes only and should be used as such by any prospective purchaser. The services, systems and appliances shown have not been tested and no guarantee as to their operability or efficiency can be given.

