

1 Epsom Close Bacchus Marsh VIC

4  2  2 

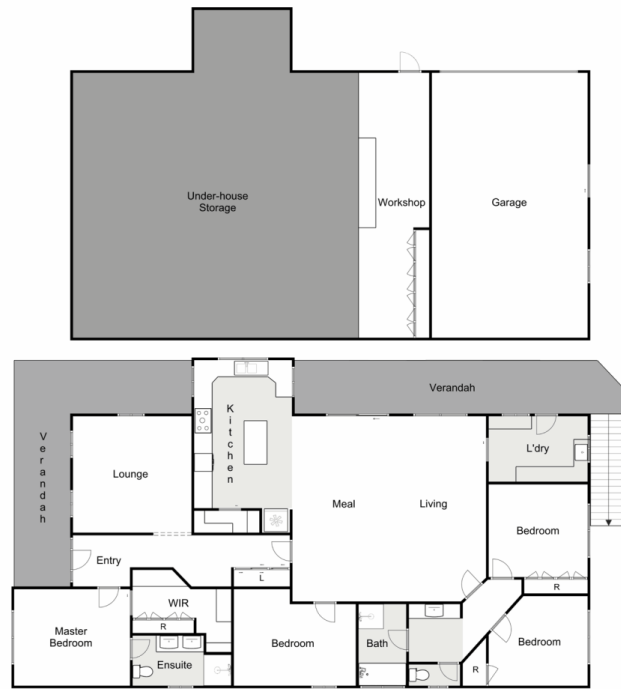
Showcasing ultramodern design with a touch of the Hamptons, this gorgeous home provides a spacious floor plan accommodating the best of family living as well as modern work-from-home arrangement.

Discover high quality flooring throughout multiple spacious living and dining areas. Create a feast in the exquisite modern high-end Kitchen which has been custom made for the entertainer. Enjoy a party with friends on the wonderful timber decked area facing amazing uninterrupted views of the hills. The home consists of four large bedrooms two with custom built wardrobes and master having a large custom built wardrobe and brand new upgraded ensuite with extra large shower and dual vanity. A central bathroom serves the rest of the home with separate toilet and vanity for ease of getting ready in the mornings and there is a large laundry with ample storage.

Price : \$ 805,000
Land Size : 1093 sqm
View : <https://www.ypa.com.au/7383160>



Jodi Nash
0419 342 120



1 Epsom Close, Bacchus Marsh

YPA

Whilst every attempt has been made to ensure the accuracy of the floor plan contained here, measurements of doors, windows, rooms and any other items are approximate and no responsibility is taken for any error, omission, or mis-statement. This plan is for illustrative purposes only and should be used as such by any prospective purchaser. The services, systems and appliances shown have not been tested and no guarantee as to their operability or efficiency can be given.

