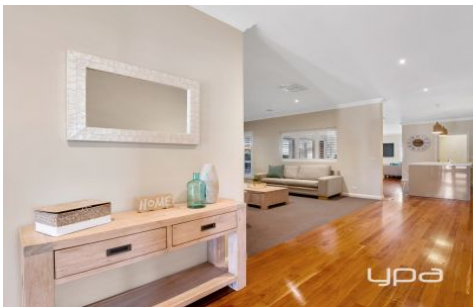


ypa



10 Douglas Close Darley VIC

4  2  6 

EXCLUSIVE LIVING IN GRANTLEIGH

Positioned on a 876m² (approx.) corner block in one of the most picturesque locations the area has to offer, with jaw dropping features from facade to backyard, this exciting modern day home includes finishes of the highest quality and offers the purchasers extras and upgrades that simply must be seen to be believed.

Comprising of four generously sized bedrooms all with built in robes, upgraded master bedroom with walk in robe flowing onto your large private full ensuite with fitted joinery for ample storage, additional bedroom wing is designed around the central bathroom with tiled shower base and plenty of storage and bench space, with additional linen cupboards and fitted drying cupboard.

Land Size : 876 sqm

View : <https://www.ypa.com.au/7383102>



Shane O'Brien
0431 766 082



10 Douglas Close, Darley

ypa

Whilst every attempt has been made to ensure the accuracy of the floor plan contained here, measurements of doors, windows, rooms and any other items are approximate and no responsibility is taken for any error, omission, or mis-statement. This plan is for illustrative purposes only and should be used as such by any prospective purchaser. The services, systems and appliances shown have not been tested and no guarantee as to their operability or efficiency can be given.

