



26 Tate Street DARLEY VIC

4  2  2 

This beautiful family home is set on an approximately 880m² block in the popular Grantleigh Estate. Within walking distance to Darley primary school and the Lerderderg River walking track.

Land Size : 880 sqm

View : <https://www.ypa.com.au/7382925>

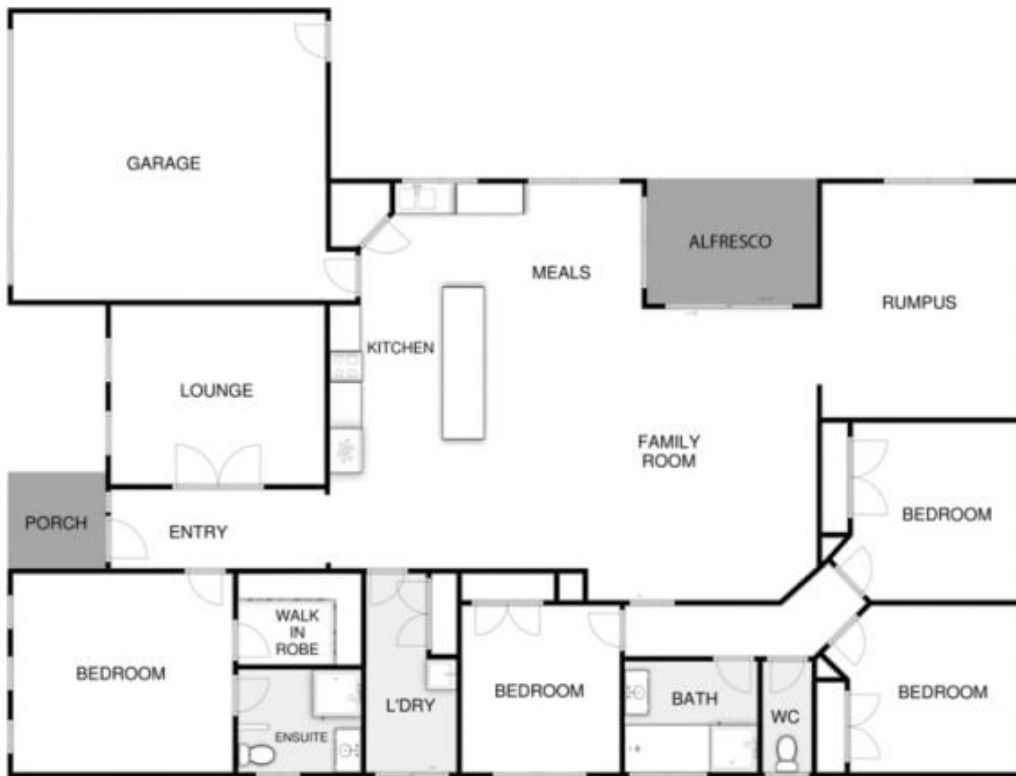
Comprising of four generously sized bedrooms, master bedroom with walk in robe & full ensuite, all remaining bedrooms have built in robes. The spacious kitchen boasts plenty of storage as well as 900mm stainless steel appliances, dishwasher and stone benchtops.

The open plan living area flows onto your lounge/rumpus room providing the whole family with space and comfort. Stepping outside, you are instantly greeted with the prospect of major potential to make this home into the perfect one for you, whether it be a shed, pool or garden, the clear side access makes this limitless.

Other features include: front theatre room, ducted heating,



Shane O'Brien
0431 766 082



26 Tate Street, Darley

every attempt has been made to ensure the accuracy of the floor plan contained here, measurements of doors, windows, rooms and any other items are approximate and no responsibility is taken for any error, omission, or mis-statement. an is for illustrative purposes only and should be used as such by any prospective purchaser. The services, systems and appliances shown have not been tested and no guarantee as to their operability or efficiency can be given.

