



## 19 Archer Drive Kurunjang VIC

4 2 2

This immaculately presented and quality-built home in the peaceful and beautiful suburb of Kurunjang is one not to be missed. Sitting across the road from a park, this grand residence is located perfectly in an impressive and quiet neighbourhood within close proximity to schools of all levels, freeway access, shopping and parklands. This stunning family home has ample space and multiple upgrades on offer for one lucky family.

Upon arriving at this grand home you will be immediately impressed by the beautiful façade and low maintenance landscaping. The formal living upon entry showcases ample space and an abundance of natural light flows through this home. The heart of the home centres around a large kitchen featuring stainless steel appliances, 900mm oven/cooktop, ample bench space, plenty of cabinetry and walk in pantry. This overlooks the large open meals area

**Price** : \$ 635,000

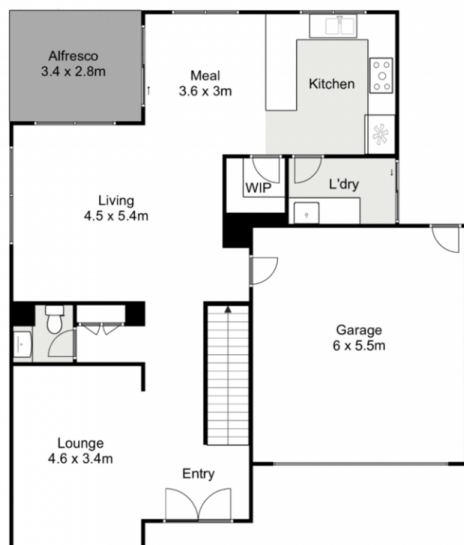
**View** : <https://www.ypa.com.au/7372922>



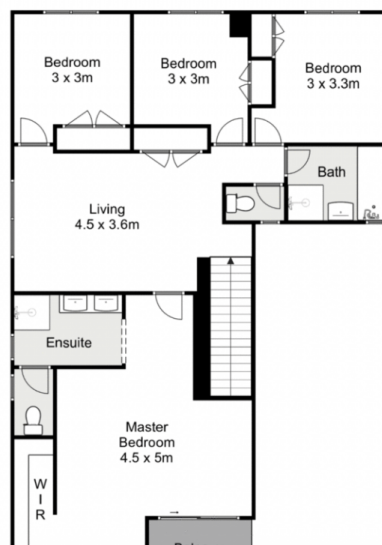
**Shane Spiteri**  
0488 980 115



**Ricky Frew**  
0402 007 100



Ground Floor



First Floor

## 19 Archer Drive, Kurunjang

Whilst every attempt has been made to ensure the accuracy of the floor plan contained here, measurements of doors, windows, rooms and any other items are approximate and no responsibility is taken for any error, omission, or mis-statement. This plan is for illustrative purposes only and should be used as such by any prospective purchaser. The services, systems and appliances shown have not been tested and no guarantee as to their operability or efficiency can be given.

