



5 Clarice Crescent Brookfield VIC

4 2 2

Situated in close proximity to all levels of schooling, parks, walking tracks, public transport and future development, this property offers great value for first home buyers, downsizers or the astute investor.

This home comprises of four generously sized bedrooms, master bedroom complete with walk in robe and bright ensuite, with the remaining three bedrooms all containing built in robes and serviced by a stunning central bathroom. A formal lounge offers another space for the family to enjoy.

The modern kitchen featuring: ample storage space, stone bench tops, dishwasher and stainless-steel appliances which overlooks the large open plan living and meals zone with pleasing views of the spacious back yard containing plenty of grass for kids or pets to run and play.

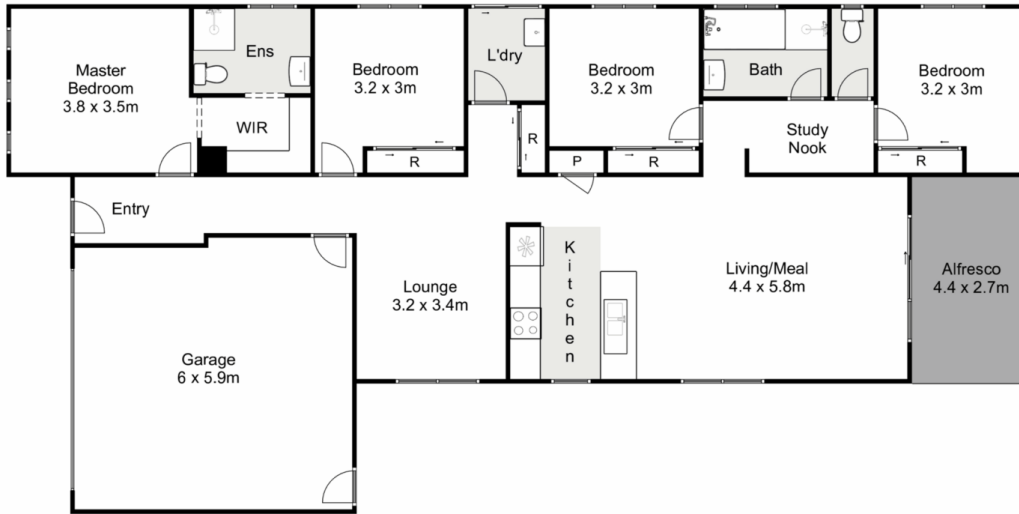
Price : \$ 530,000
Land Size : 448 sqm
View : <https://www.ypa.com.au/7372814>



Ryan Anders
0434 900 300



Shane Spiteri
0488 980 115



5 Clarice Crescent, Brookfield

Ypa

Whilst every attempt has been made to ensure the accuracy of the floor plan contained here, measurements of doors, windows, rooms and any other items are approximate and no responsibility is taken for any error, omission, or mis-statement. This plan is for illustrative purposes only and should be used as such by any prospective purchaser. The services, systems and appliances shown have not been tested and no guarantee as to their operability or efficiency can be given.

