



10 Boyd Lane Officer VIC

3  2  1 

The unassuming façade doesn't do this gorgeous home justice. As you enter, you'll be pleasantly surprised by the exceptional quality and design details of this 3-bedroom, 2-bathroom home.

Gorgeous grey tiles flow through the open-plan central living zone with a stylish and inviting setting. The contemporary kitchen makes everyday food prep a breeze with expansive light countertops and premium stainless-steel appliances, including dishwasher. It opens onto a formal dining area and comfy lounge, both with outdoor access. Wonder outside where you'll find an eclectic patio which makes you feel like you could be in the Victorian countryside, with a roof and ceiling fan to keep you cool in the warmer months. The low-maintenance garden is a great space for the kids to play, or for your very own veggie patch.

Price : \$ 620,000
Building Size : 116 sqm
Land Size : 315 sqm
View : <https://www.ypa.com.au/7371955>

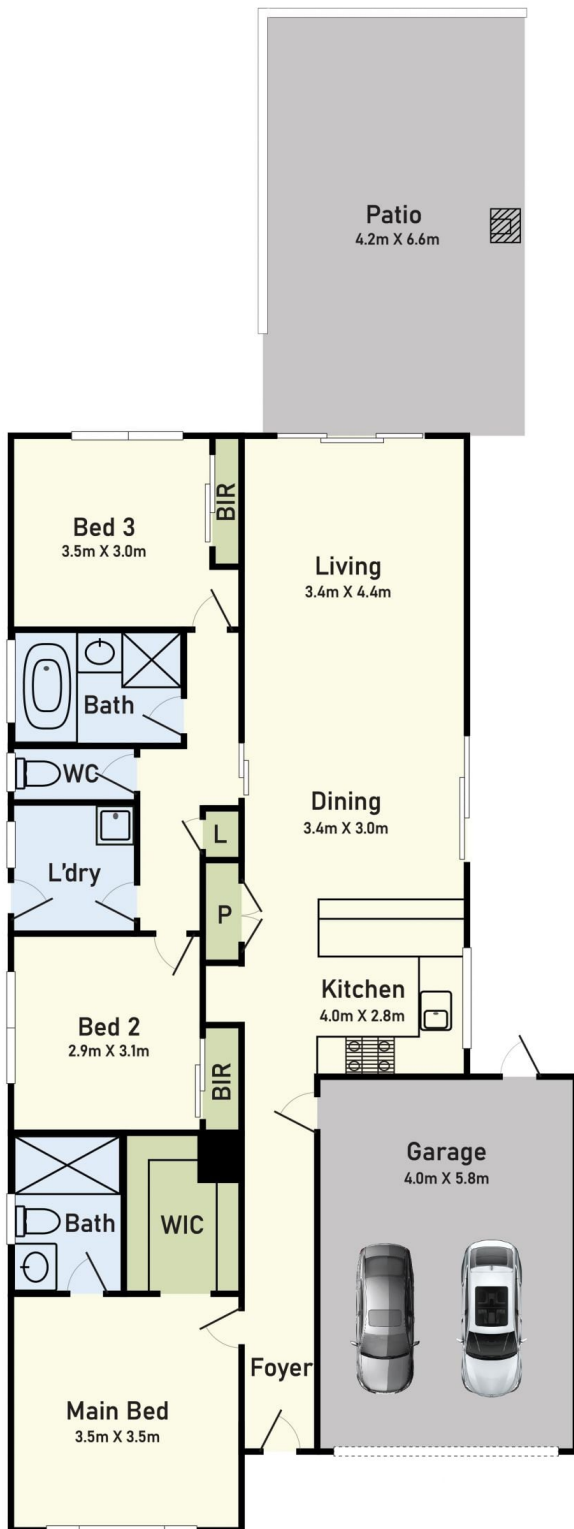


Jayne Rosevear
0438 580 780

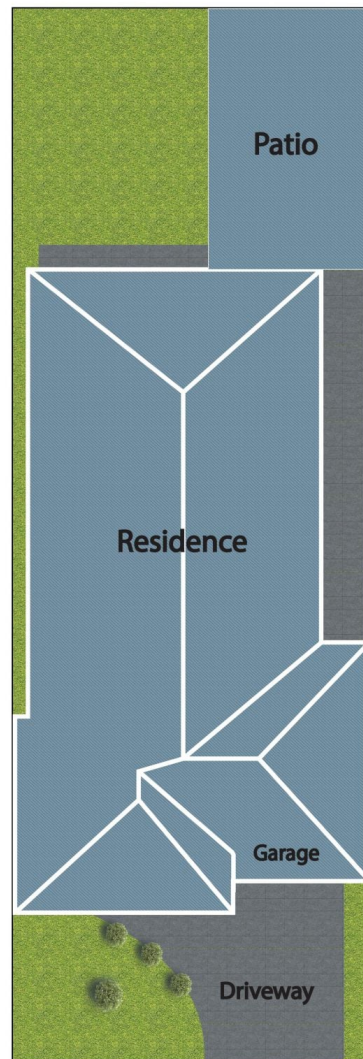


Khushboo Joshi
0432 539 506

Floor Plan



Site Plan



10 Boyd Lane, Officer, Vic 3809

* Dimensions are approximate and for illustrative purposes only