



4 Breyleigh Drive Pakenham VIC

3 2 2

This beautiful 3-bedroom, 2-bathroom family home gives you a feeling of old-world luxury from the moment you step into the lush front garden. You'll be greeted with flowers and rose bushes as you enter the property, which only gets better as you journey through to an expansive decked area at the back.

You'll enter into a sophisticated formal living area with skylight which makes for the ideal entertainment space. Then you'll find the elegant kitchen at the heart of the home, complete with loads of countertop space, gorgeous wooden cabinetry, breakfast bar, and premium stainless-steel appliances, including dishwasher. It opens onto a formal dining zone that's surrounded by expansive bay windows, and a comfortable lounge for everyday living. Large sliding doors take you through to a wrap-around deck with stunning views over the leafy neighbourhood,

Price : \$ 675,000
Land Size : 687 sqm
View : <https://www.ypa.com.au/7366341>



Jayne Rosevear
0438 580 780

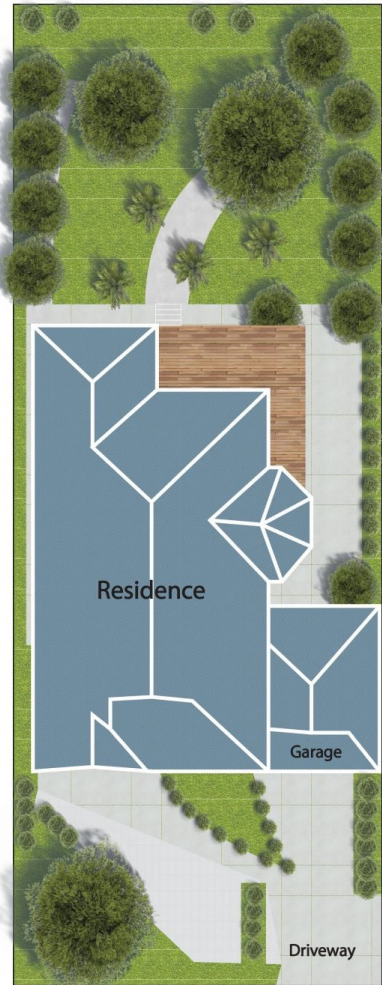


Rajdeep Brar
0431 667 600

Floor Plan



Site Plan



4 Breyleigh Drive, Pakenham, Vic 3810

* Dimensions are approximate and for illustrative purposes only