



22 Nalong Street Rye VIC

3 2 12

Priced for immediate sale and representing exceptional value in one of the most sought after locations in Australia - this turn-key family sized property offers a rare opportunity for one very lucky buyer to secure their dream permanent residence or blue-chip investment with the potential for lucrative holiday rental income.

Price : \$ 920,000

View : <https://www.ypa.com.au/7366004>

Conveniently located between the bay and the beach and with only a short walk or drive to popular cafes, recreational facilities and tourist attractions, this immaculate three bedroom home will be sure to check all of the boxes on your must have list!

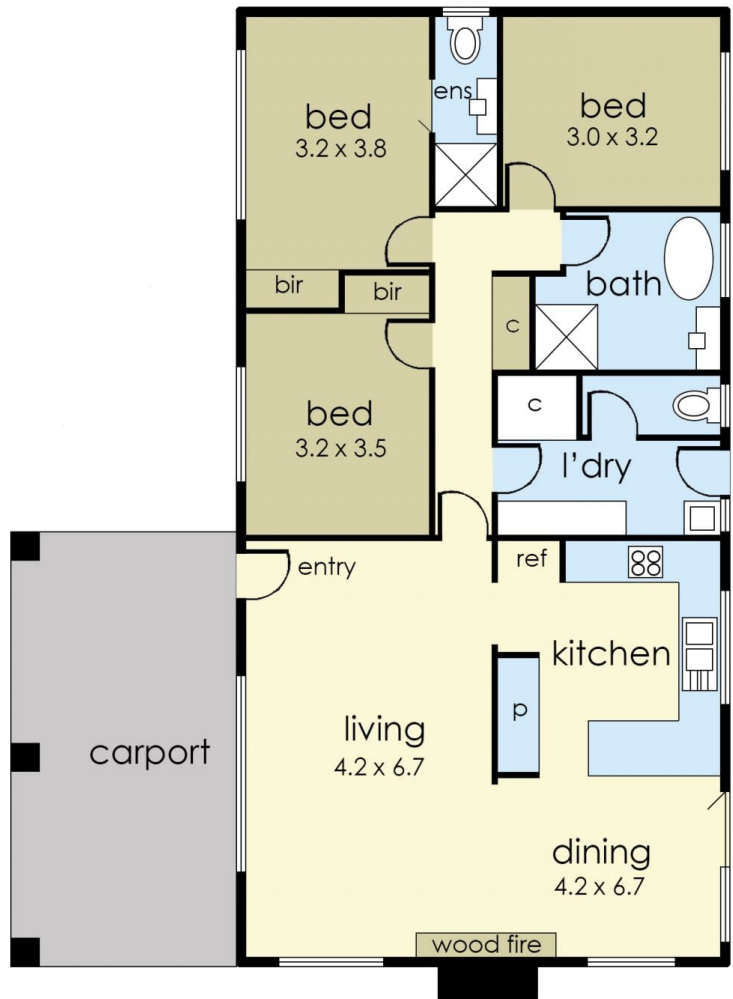
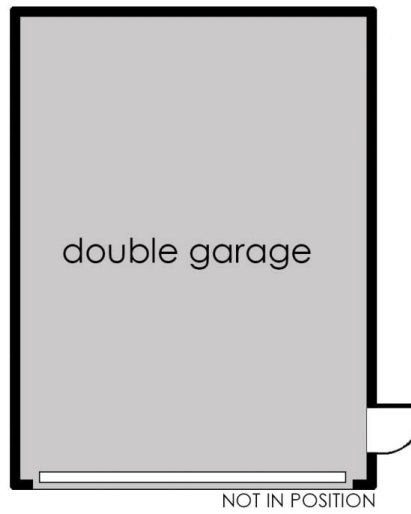
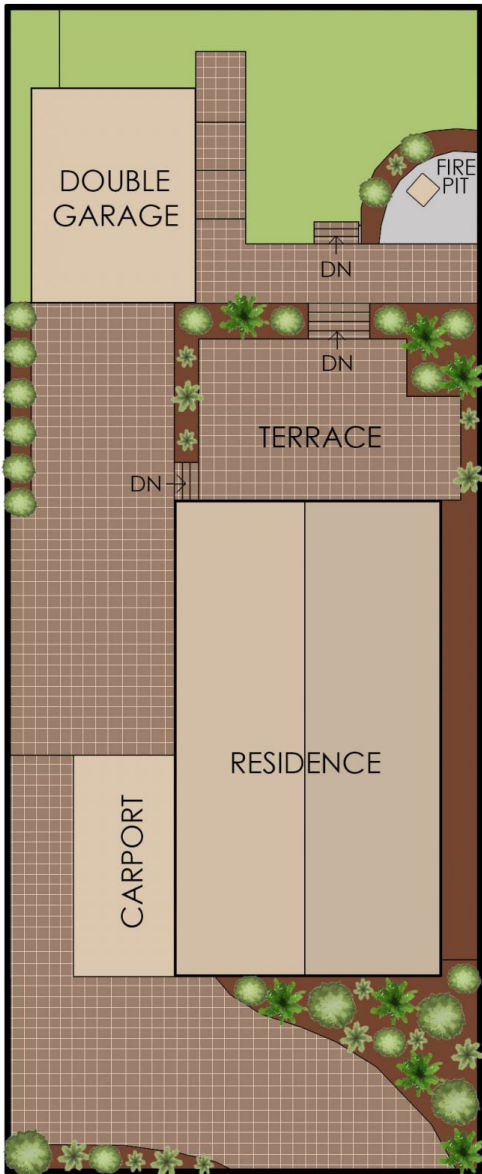


Jade Springer
0437 410 791



Will Lilkendey
0448 785 744

The well maintained classic interiors have been stylishly renovated to reflect a modern aesthetic with features including timber look ceramic floor tiling, vaulted exposed beam ceiling, cosy wood burning heater, and quality



22 Nalong Street, Rye

This floorplan is for illustration purposes only and no warranty is given to its accuracy. Purchasers are advised to carry out their own investigations.