



1/22 Bluebell Drive Epping VIC

3 1 2

This immaculately presented and well maintained family home will certainly tick all the boxes upon inspection.

Perfectly positioned on a low maintenance yet spacious parcel of land, with manicured front and rear gardens, for you to enjoy and admire.

Centrally located between thriving Plenty Valley, Epping plaza and Costco you'll be spoilt for choice.

You can leave the car at home and select between bus and train stations, both within short walking distance. Quality schools and all local amenities are also close by!

The home itself comprises of three spacious bedrooms, all fitted with built in robes. A large central bathroom with a separate tub is sure to delight.

Recently refurbished with new quality carpets and recently re-painted, there is nothing to do and turn key ready.

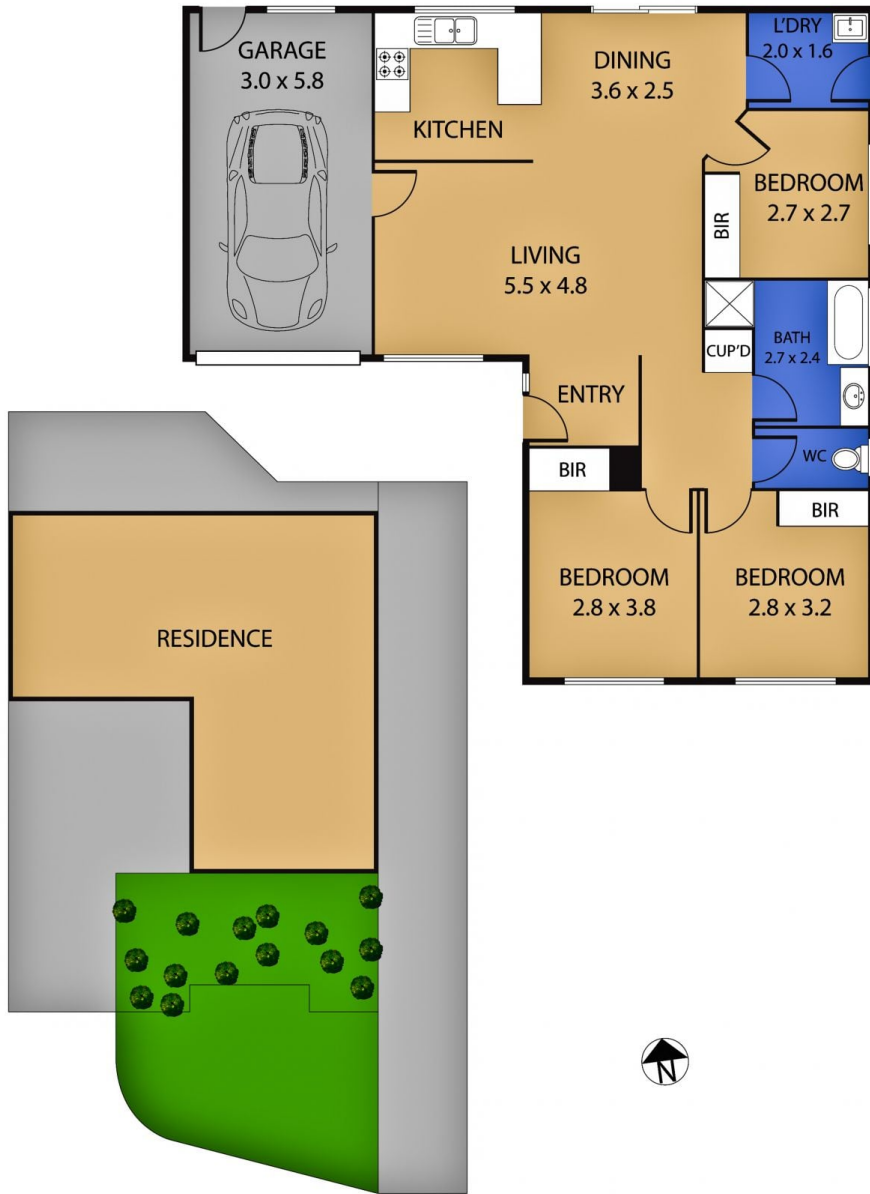
View : <https://www.ypa.com.au/7365775>



Carla Primiano
0407 183 331



Roger Lee
0449 977 719



1/22 Bluebell Drive Epping

Scale in metres. Indicative only. Dimensions are approximate. All information contained herein is gathered from sources we believe to be reliable. However we cannot guarantee its accuracy and interested persons should rely on their own enquiries.