



99 Market Road Werribee VIC

3  2  2 

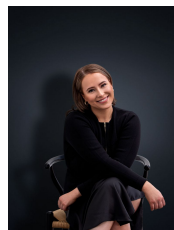
Positioned perfectly within central Werribee! Only a short stroll to all local amenities, Primary / Secondary schooling, local transport including Werribee Train Station & bus stops, easy freeway access along with an abundance of cafes, shops, and boutiques.

Land Size : 729 sqm

View : <https://www.ypa.com.au/7364431>

Property Features:

- ? Three generous sized bedrooms w/ built in wardrobes
- ? Formal lounge room (upon entry)
- ? Large kitchen & meals zone w/ stainless steel appliances, stone benchtops and an abundance of storage space
- ? Main-central bathroom
- ? Updated laundry space, inclusive of secondary shower and toilet
- ? Double garage w/ separate roller door
- ? Ducted heating & air conditioning throughout



Ali Dowling
03 9741 7777

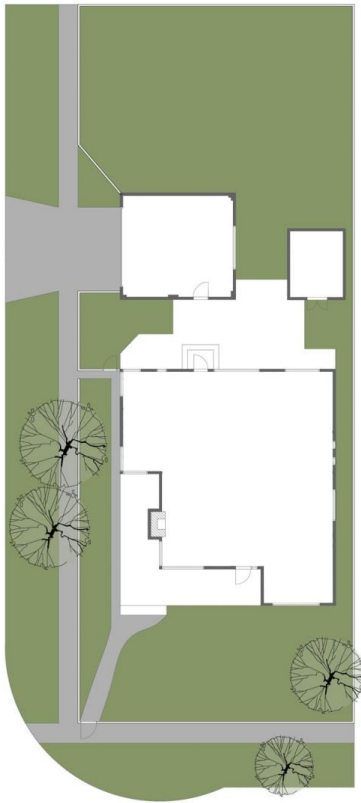


FLOOR PLAN IS PROVIDED AS INDICATIVE LAYOUT ONLY, MEASUREMENTS ARE NOT AVAILABLE, FLOORPLAN IS NOT TO SCALE.
NO GUARANTEES PROVIDED ON ACCURACY

99 Market Road, Werribee



99 Market Road, Werribee



FLOOR PLAN IS PROVIDED AS INDICATIVE LAYOUT ONLY, MEASUREMENTS ARE NOT AVAILABLE, FLOORPLAN IS NOT TO SCALE.
NO GUARANTEES PROVIDED ON ACCURACY