

3 Osprey Street Werribee VIC

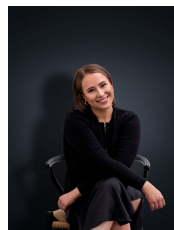
3  1  2 

Set in the heart of Werribee, a stone's throw away from some of the most desired amenities in the city of Wyndham - Pacific Werribee Shopping Centre, Aqua Pulse, Werribee & Hoppers Crossing Train Station & Mercy Hospital. You'll find convenience in a short stroll to Sims, IGA, 7-Eleven & the ever-so-popular Starbucks.

Land Size : 580 sqm
View : <https://www.ypa.com.au/7364399>

Property Features:

- ? Three spacious bedrooms w/ large double built in robes
- ? Central main bathroom & separate toilet
- ? Large formal living room
- ? Kitchen with ample storage whilst overlooking meals zone
- ? Covered outdoor entertaining zone
- ? Single carport with access to rear gardens
- ? Well-manicured front & rear gardens



Ali Dowling
03 9741 7777



FLOOR PLAN IS PROVIDED AS INDICATIVE LAYOUT ONLY, MEASUREMENTS ARE NOT AVAILABLE, FLOORPLAN IS NOT TO SCALE.
NO GUARANTEES PROVIDED ON ACCURACY

3 Osprey Street, Werribee