



2 Shelley Place Hoppers Crossing VIC

3  1  3 

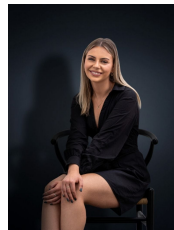
Set in the most convenient pocket is this family fitting three-bedroom home. Located within close proximity to local schools, shops, public transport & walking tracks!

View : <https://www.ypa.com.au/7364327>

Property features include:

- ? Three bedrooms, two fitted with built in robes - Master with walk in robe
- ? Large tiled lounge room upon entry
- ? Open plan kitchen/meals area
- ? Central bathroom with spa bath & separate toilet
- ? Wrap around pergola with timber decking

Other features include; two split systems, modern cooking appliances, dishwasher, three lock up garages, work shed & low maintenance grounds/gardens.



Kiarah Bagnato
0449 941 895