



58 Valewood Drive Wyndham Vale VIC

3 1 2

Located in the popular growing city of Wyndham is this fantastic family home! Located within walking distance to local shops, schools and public transport, also within a 5-minute drive from Werribee CBD and Railway station, likewise Wyndham Vale Train Station - take your pick!

Features Include:

- ? Built in robes features in all three bedrooms
- ? Kitchen with abundance of cupboard space, pantry, cooktop and dishwasher
- ? Central bathroom close to other bedrooms with separate laundry

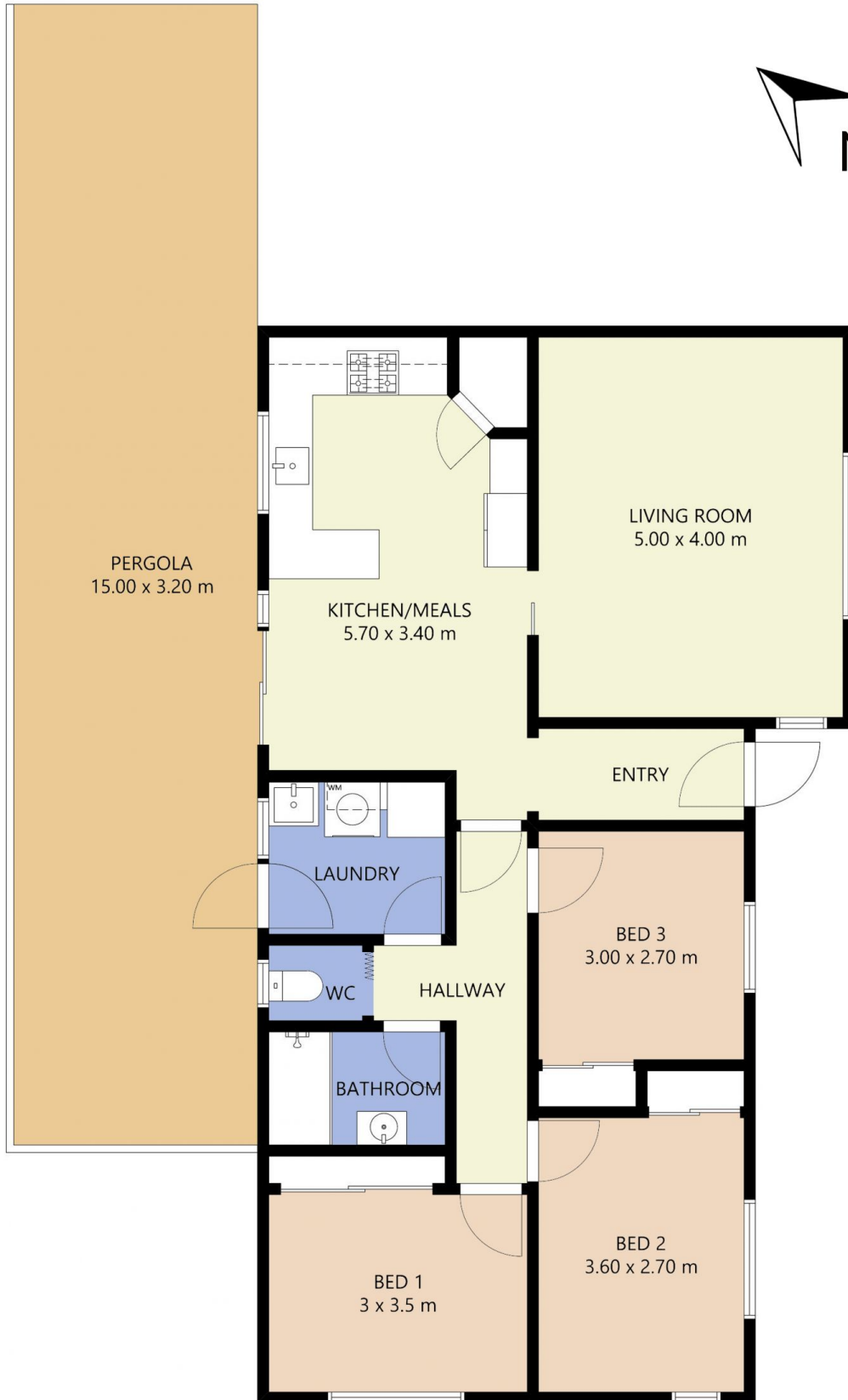
Additional features include: ducted heating and air-conditioning, spacious family area and a large backyard.

*Appointments are conducted in accordance with the latest

View : <https://www.ypa.com.au/7364281>



Ali Dowling
03 9741 7777



FLOOR PLAN IS PROVIDED AS INDICATIVE LAYOUT ONLY, MEASUREMENTS ARE NOT AVAILABLE, FLOORPLAN IS NOT TO SCALE.
NO GUARANTEES PROVIDED ON ACCURACY

58 Valewood Drive, Wyndham Vale