



## 24 Trent Close Werribee VIC

3 2

Located smack bang in the centre of Werribee, this dynamic property offers all the features that you could be wanting in a home. Immaculately presented, this property is positioned within very close distance to loads of local amenities including; Pacific Werribee (Approx 2.1km), Werribee CBD & Train Station (Approx 2.5km), Reputable schools including Heathdale Christian College, Bethany & Westgrove Primary School, public transport & parklands.

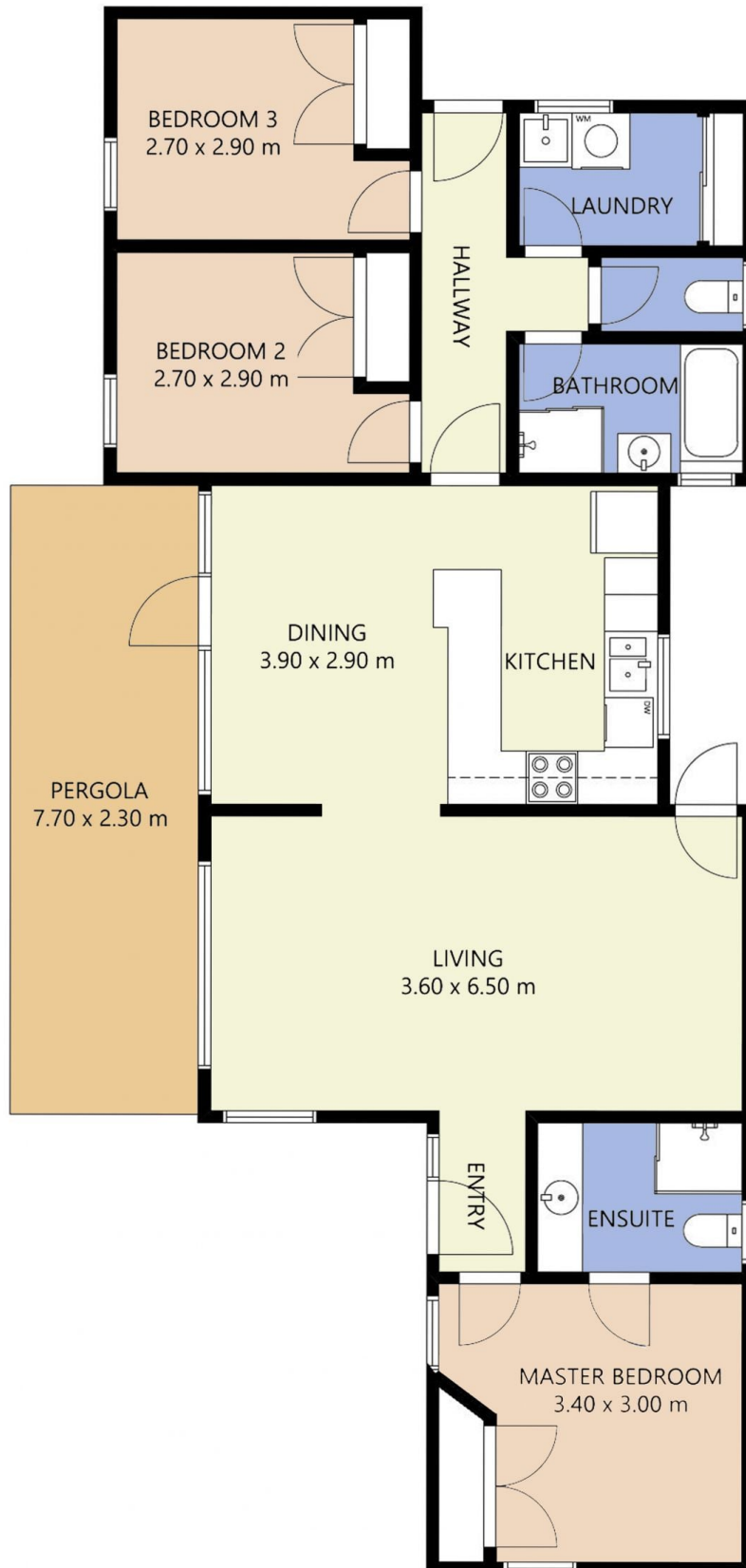
**View** : <https://www.ypa.com.au/7364218>

### Property features:

- ? Master bedroom with ensuite, built in robes featured in all three bedrooms
- ? Massive living area upon entry
- ? Open plan kitchen/dining arrangement with loads of cupboard space & dishwasher



**Ali Dowling**  
03 9741 7777



FLOOR PLAN IS PROVIDED AS INDICATIVE LAYOUT ONLY, MEASUREMENTS ARE NOT AVAILABLE, FLOORPLAN IS NOT TO SCALE.  
NO GUARANTEES PROVIDED ON ACCURACY

## 24 Trent Close, Werribee