



16 Dutch Avenue WYNDHAM VALE VIC

4  2  2 

Conveniently located with direct access to Ballan Road, living within the Lollipop Hill estate is easy! Especially when you're only a short distance to all the established amenities of Manor Lakes and with many more new facilities to come!

View : <https://www.ypa.com.au/7363193>

Property Features:

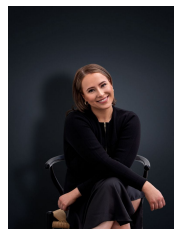
Four generous fitted bedrooms, including master with walk in robe & en suite

Bright central kitchen with stone bench-tops & walk in pantry

Large family & living zone, along with an additional secondary living/lounge room

Double car remote garage

This property also includes additional comforts such as gas ducted heating and split system cooling.



Ali Dowling
03 9741 7777