

47 Oneill Avenue HOPPERS CROSSING VIC

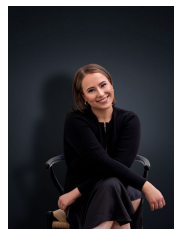
3 2 1

Located in the heart of Hoppers Crossing, central within the Mossfiel Estate. Situated within close-proximity to Pacific Werribee shopping centre, Hoppers Crossing train station/the public transport network, Aqua Pulse/Encore events centre, local primary/secondary schools, doctor/medical centres, in addition to hosting easy freeway access What more could you ask for!

View : <https://www.ypa.com.au/7362972>

Property Features:

- Three bedrooms fitted with built in robes, master tailored with walk in robe & en suite
- Central bathroom inclusive of bathtub, along with separate internal laundry with rear access
- Formal lounge room, in addition to open plan living & dining with Coonara fireplace
- Tiled kitchen offering lots of cupboard space, overlooking



Ali Dowling
03 9741 7777