



1/36 Langridge Street HOPPERS CROSSING VIC

3  2 

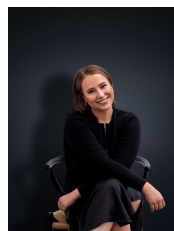
Located in popular Mossfiel Estate, this updated home is a classic style with modern features and comforts. This property is central to all amenities including a short drive to Hoppers Crossing Station, shops, and a stone throw away from Mossfiel Primary.

View : <https://www.ypa.com.au/7362824>

Property Features:

- Three generously sized bedrooms
- Open plan living to kitchen & lounge room
- Abundance of natural light throughout
- Separate en-suite to master

Extra Features: Evaporative cooling, split system in main lounge area, ducted heating, stainless steel appliances, along with the convenience of off-street parking.



Ali Dowling
03 9741 7777