



## 11 Barwise Street LAVERTON VIC

4  1  4 

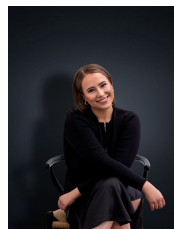
Located in the heart of the rapidly growing suburb of Laverton, 11 Barwise Street is just moments away from the city centre, freeway entrance, Laverton Train Station, shops, schools, parklands, and much more.

View : <https://www.ypa.com.au/7362737>

### Property features include:

- Four good sized bedrooms
- Open L-shaped kitchen/dining with adjoining lounge area
- Great size rumpus room
- Central bathroom
- Outdoor decked area

Extra features: kitchen with stainless steel appliances, hardwood timber floorboards, ducted heating, split system cooling, dishwasher, 5kw solar system with 16 panels, 7200L of water in 3 tanks, a massive 8x9 meter garage/shed/workshop.



**Ali Dowling**  
03 9741 7777