



## 7 Montpelier Drive WERRIBEE VIC

4 2 2

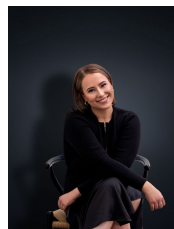
This grand, masterfully designed, family home is located in the premium pocket of Werribee's 'South Side' and offers a truly exclusive lifestyle. Positioned for convenience close to local parks, schools and just a short drive for freeway access. You'll be instantly captivated by the beautifully manicured front gardens.

**View :** <https://www.ypa.com.au/7362600>

### Property features include:

- Four bedrooms, including a master with full en-suite with a separate toilet, large walk-in-robe and a ceiling fan
- Large light filled formal dining and family room
- Kitchen offers an abundance of cupboard/ bench space and overlooking an open plan living/ meals area
- Generously sized family bathroom with a separate bathtub
- Double remote garage with internal and external access

Extra Features: a gorgeously maintained low maintenance



**Ali Dowling**  
03 9741 7777