



8 Cromwell Street WERRIBEE VIC

3 2 1

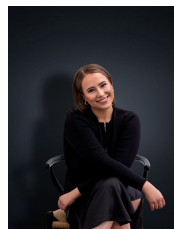
Affordable, bright & sun filled, this three-bedroom home offers everything you have been searching for! Centrally located to the popular Pacific Werribee shopping complex, Bethany Catholic & Westgrove primary school, Werribee train Station, along with Hoppers Crossing Train Station nearby.

Property features include:

- Three bedrooms, fitted with built in robes
- Separate living/lounge zones
- Open plan kitchen & dining
- Single lock up garage
- Lovely outdoor entertaining area, with gorgeous grounds & gardens

Extra features include; Modern cooking appliances, ducted heating, split system cooling, security alarm system, along with fitted security doors throughout.

View : <https://www.ypa.com.au/7362558>



Ali Dowling
03 9741 7777