



28 Malleehen Street WERRIBEE VIC

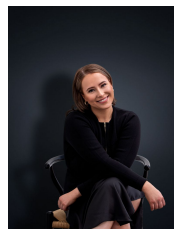
3 2 2

Located only a short distance from Pacific Werribee & the CBD, is this fantastic three-bedroom, family home. Offering a spacious master with built in robe, along with an exclusive ensuite & two secondary bedrooms; Both with built in robes. Presenting an open plan family/lounge area, in addition to a gorgeous timber kitchen with plenty of cupboard space. Extra features include split system heating/cooling, ceiling fans throughout, dishwasher, double garage, pergola area and a large backyard for the kids to play!

(PHOTO ID REQUIRED AT OPEN FOR INSPECTION)

At YPA Estate Agents 'our service will move you'

View : <https://www.ypa.com.au/7362480>



Ali Dowling
03 9741 7777