



## 35 Corbet Street Weir Views VIC

4 3 1

Here is your chance to grasp this rare opportunity in the popular Toolern Waters estate in Weir Views. This beautiful area provides easy access to schools, shops, parks, brand new Opalia Shopping Centre, Melton South Train Station, The Weir, freeway access and much more future development. This quality home is the amazing opportunity for anybody looking to get into the market with a perfect investment.

Upon entering this amazing home you will be amazed by the functional floorplan. There is a bedroom downstairs with an ensuite - perfect for a downstairs master bedroom. Moving through the home the open plan living and meals area is spacious, being overlooked by a well equipped kitchen which includes stone benchtop, stainless steel appliances, gas cook top and dishwasher.

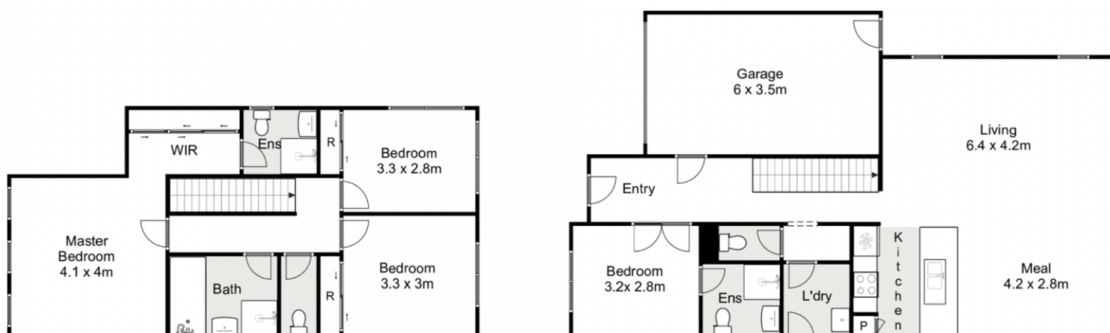
**Price** : \$ 510,000  
**Land Size** : 350 sqm  
**View** : <https://www.ypa.com.au/7362376>



**Shane Spiteri**  
0488 980 115



**Maddison Paans**  
0433 239 783



## 35 Corbet Street, Weir Views

Whilst every attempt has been made to ensure the accuracy of the floor plan contained here, measurements of doors, windows, rooms and any other items are approximate and no responsibility is taken for any error, omission, or mis-statement. This plan is for illustrative purposes only and should be used as such by any prospective purchaser. The services, systems and appliances shown have not been tested and no guarantee as to their operability or efficiency can be given.

