



85 Pasadena Street Rye VIC

4 3 2

Peacefully nestled within a glorious garden setting alive with the sound of the crashing ocean waves and native birdsong, this captivating four-bedroom residence's evocative charm is merged with inspired contemporary style, forming a beautiful retreat that adapts to every stage of family life.

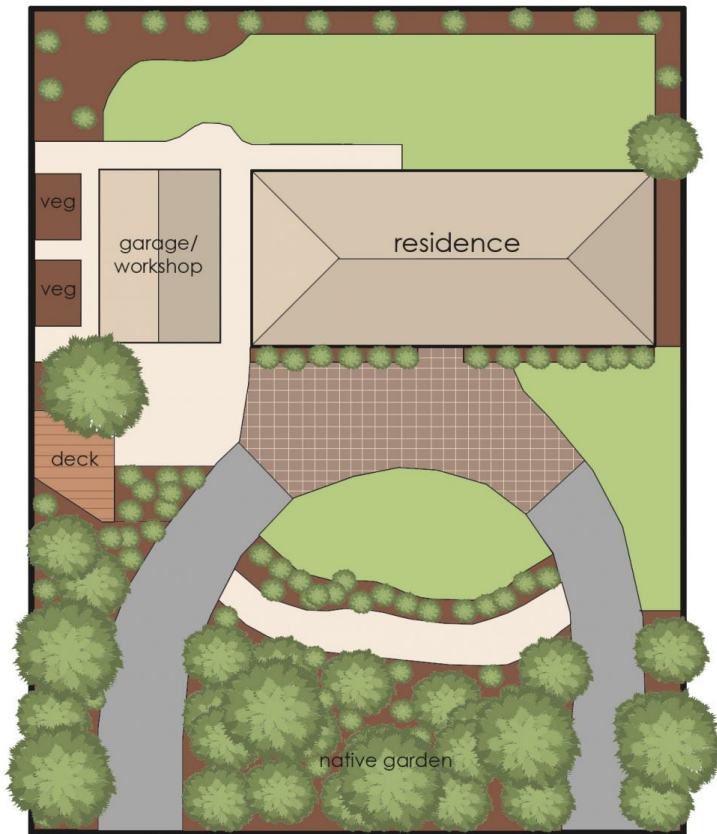
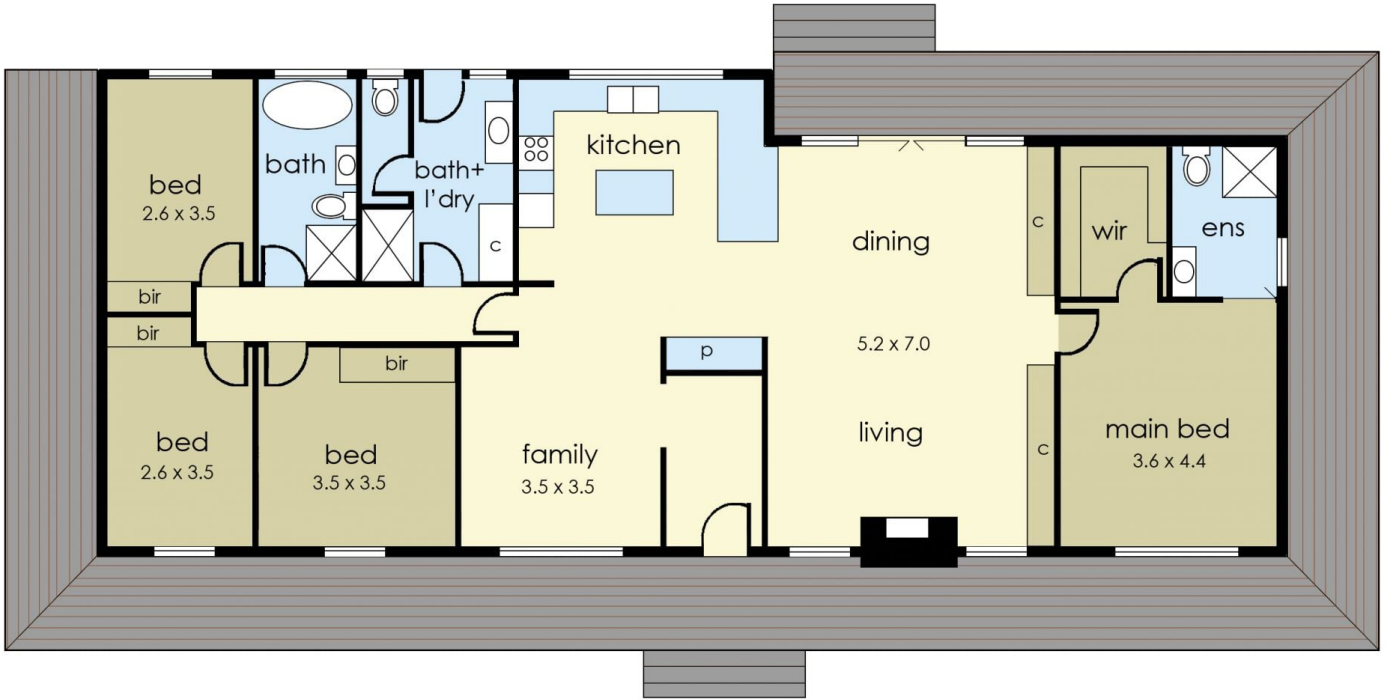
Its remarkably elevated position and undeniable beauty are matched by its lush and private surroundings, revealing a breathtaking display of established natives and easy-care flora that provide a seasonal array of brilliant colours and delectable fruits.

The single-level home showcases luxury Hamptons living, with soaring raked ceilings, a soft coastal palette, a roaring fireplace, and stunning timber floors adding warmth to an open-plan design. Accommodating the practicalities of

Price : \$ 1,850,000
Land Size : 1742 sqm
View : <https://www.ypa.com.au/7362139>



Chris Fahl
0404 668 818



85 Pasadena Street, Rye

© Produced by DND Floor Plans.

This floorplan is for illustration purposes only and no warranty is given to its accuracy. Purchasers are advised to carry out their own investigations.