

6 Odessa Court Werribee VIC

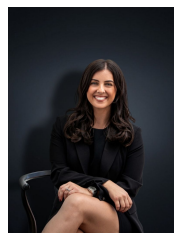
3 2 2

This home offers everything you could possibly need for young families, first home buyers & investors alike. Located in a central Werribee location close by to Werribee CBD you are positioned amongst parklands, within walking distance to reputable schools including Thomas Chirnside Primary School and also within walking distance to the renowned Eagle Stadium, child care centres and public transport.

With a spacious floor plan and a large backyard, positioned on approximately 522 sq m this fabulous home offers;

- ? Three spacious bedrooms
- ? Master bedroom with walk in robe and ensuite
- ? Remaining bedrooms with built in robes
- ? Separate study / home office or additional living space
- ? Open plan kitchen/meals and family living area
- ? Kitchen boasts plenty of cupboard space, stainless steel

Price : \$ 588,000
Land Size : 522 sqm
View : <https://www.ypa.com.au/7362123>



Kirsty Cunningham
0414 344 475



Kiarah Bagnato
0449 941 895



FLOOR PLAN IS PROVIDED AS INDICATIVE LAYOUT ONLY, MEASUREMENTS ARE NOT AVAILABLE, FLOORPLAN IS NOT TO SCALE.
NO GUARANTEES PROVIDED ON ACCURACY

6 Odessa Court, Werribee