



35 Callistemon Drive Hoppers Crossing VIC

3 2 10

Set in a peaceful pocket of Hoppers Crossing sits this 3 bedroom, 2 bathroom, solid home on a sprawling (568m2 approx.) block of land. Boasting BIR in all bedrooms and a spacious living and family meals area, all adjacent to the well maintained kitchen with an abundance of cupboards and bench space.

When you step outside, it's where the magic begins. Fitted with a huge shed to accommodate for any tradesperson, car enthusiast or wanting extra storage for all year entertaining with a low maintenance rear, this makes it the perfect place to relax - just in time for summer BBQ's. All with drive through access for further off-street parking.

Conveniently located in a quiet location just minutes away from Medical Centres, Pacific Werribee Shopping Centre, Hoppers Crossing Train station and popular schools.

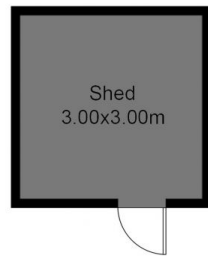
Price : \$ 555,000
Land Size : 568 sqm
View : <https://www.ypa.com.au/7362108>



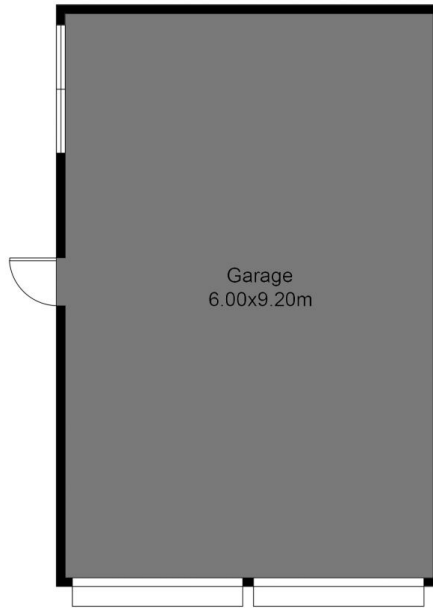
Petar Krnjeta
0406912320



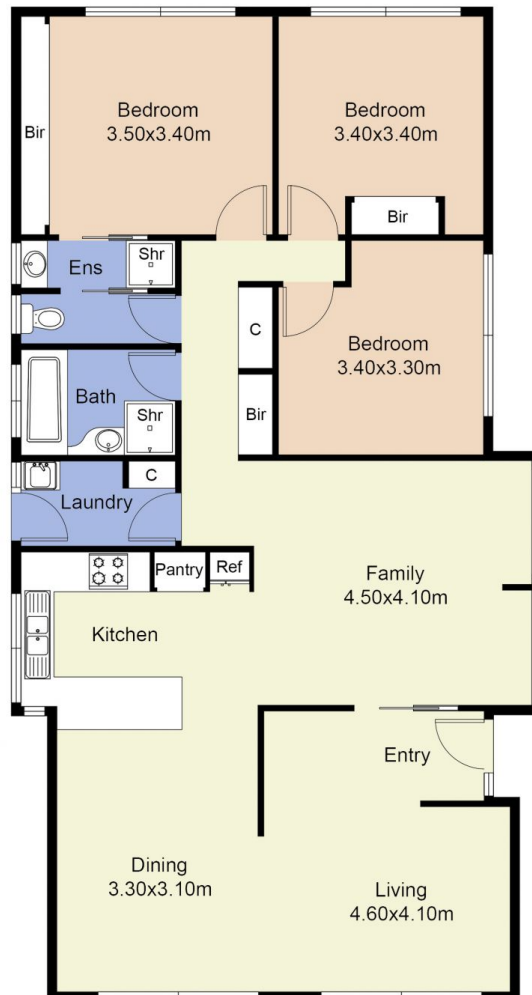
Abdul Merabi
0424263506



(NOT IN POSITION)



(NOT IN POSITION)



FLOOR PLAN IS PROVIDED AS INDICATIVE LAYOUT ONLY, MEASUREMENTS ARE NOT AVAILABLE, FLOORPLAN IS NOT TO SCALE.
NO GUARANTEES PROVIDED ON ACCURACY

35 Callistemon Drive, Hoppers Crossing