



25 Lollipop Drive Wyndham Vale VIC

4 2 4

Bringing you the best home for entertainment that you can ever imagine! In a very sought-after blue-chip location, the Lollipop Estate. Tree Lined amongst the Lollipop Creek Reserve with scenic walking tracks this is a home that will forever make a statement.

It's not often that properties sell in this position and this one is certainly special. Positioned on approximately 1000 sqm, space will never be an issue. The home is loaded with features and there really isn't anything more a family could ask for, including:

- ? Four very spacious fitted bedrooms
- ? Master bedroom with beautiful bay window, walk in robe and ensuite
- ? Downstairs home office with adjacent mudroom (Perfect for a WFH business)
- ? Formal lounge with gas log heater upon entry and

Price : \$ 960,000
Land Size : 999 sqm
View : <https://www.ypa.com.au/7362100>



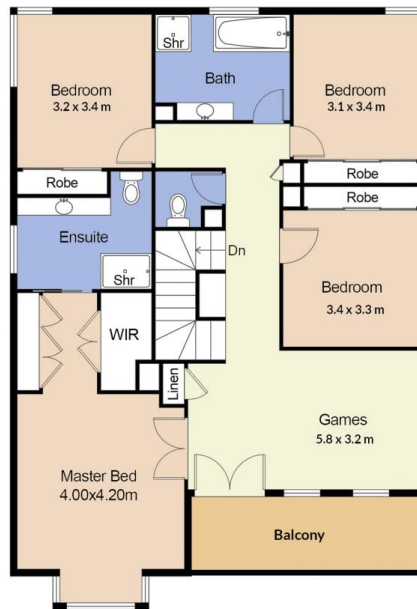
Jarrod Loughlin
0405 857 895



Kirsty Cunningham
0414 344 475



GROUND FLOOR PLAN



FIRST FLOOR PLAN

FLOOR PLAN IS PROVIDED AS INDICATIVE LAYOUT ONLY, MEASUREMENTS ARE NOT AVAILABLE, FLOORPLAN IS NOT TO SCALE.
NO GUARANTEES PROVIDED ON ACCURACY

25 Lollipop Drive, Wyndham Vale