



21 Harogen Drive Werribee VIC

3 2 2

Nestled within the young and impressive Kings Leigh estate, this stunning newly built home is nothing other than a first homeowners dream!

Situated within close proximity to Werribee CBD with Restaurants, Shops, Cafes and reputable schools, you are minutes from all amenities! With close access to the Princes Freeway and Riverwalk water park, Riverwalk Primary School and reputable child care centres, this home is perfect for a young family, downsizers and savvy investors alike!

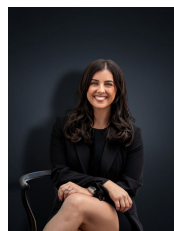
Situated amongst other quality this spacious floor plan offers all the bells and whistles that will save the hassle of building yourself! This beautiful home offers;

- ? Three large bedrooms
- ? Master bedroom with double ensuite and walk in robe
- ? Remaining bedrooms both with built in robes

Price : \$ 557,000

Land Size : 262 sqm

View : <https://www.ypa.com.au/7362080>



Kirsty Cunningham
0414 344 475



Kiarah Bagnato
0449 941 895



FLOOR PLAN IS PROVIDED AS INDICATIVE LAYOUT ONLY, MEASUREMENTS ARE NOT AVAILABLE, FLOORPLAN IS NOT TO SCALE.
NO GUARANTEES PROVIDED ON ACCURACY

21 Harogen Drive, Werribee