



## 17 Thornbill Drive Werribee VIC

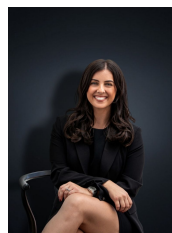
3 1 4

No other home screams potential like 17 Thornbill Drive, Werribee. Prominently positioned in a booming Werribee location this home is situated on approximately 718 sq m, an opportunity is here that is rarely now offered to the market. With future subdivision potential (STCA) this is an investment opportunity that requires little procrastination.

Located within close proximity to schools, local shops, parks, freeway access & public transport everything needed is within easy reach. With Werribee CBD & Railways station only approximately 2km away & Pacific Werribee approximately 2.3km away this location is priceless! The home in brilliant condition offers;

- ? Three spacious bedrooms with built in robes
- ? Central bathroom
- ? Large L-shaped lounge room upon entry
- ? Kitchen/ Dining area

**Price** : \$ 570,500  
**Land Size** : 718 sqm  
**View** : <https://www.ypa.com.au/7362053>



**Kirsty Cunningham**  
0414 344 475



**Kiarah Bagnato**  
0449 941 895



FLOOR PLAN IS PROVIDED AS INDICATIVE LAYOUT ONLY, MEASUREMENTS ARE NOT AVAILABLE, FLOORPLAN IS NOT TO SCALE. NO GUARANTEES PROVIDED ON ACCURACY

# 17 Thornbill Drive, Werribee