



13 Oppy Crescent Hoppers Crossing VIC

5 3 2

Beautifully nestled within one of Hoppers Crossing most sought after locations is this absolutely stunning family home. Situated on a whopping 710m² approx this is sure to get your heart racing.

Presenting five spacious fitted bedrooms, including large master with walk in robe and lavish ensuite with a large shower base. Step inside and be immediately greeted by generous sized formal living allowing for dual living zones before flowing into a more open plan design.

Featuring a hostess kitchen showcasing all stainless steel appliances and ample cupboard and plenty of clear bench space. Large living is what this well thought floor plan offers with an array of open plan family/meals area.

Outdoors presents a great sized Pergola ideal for those

Price : \$ 690,000

Land Size : 710 sqm

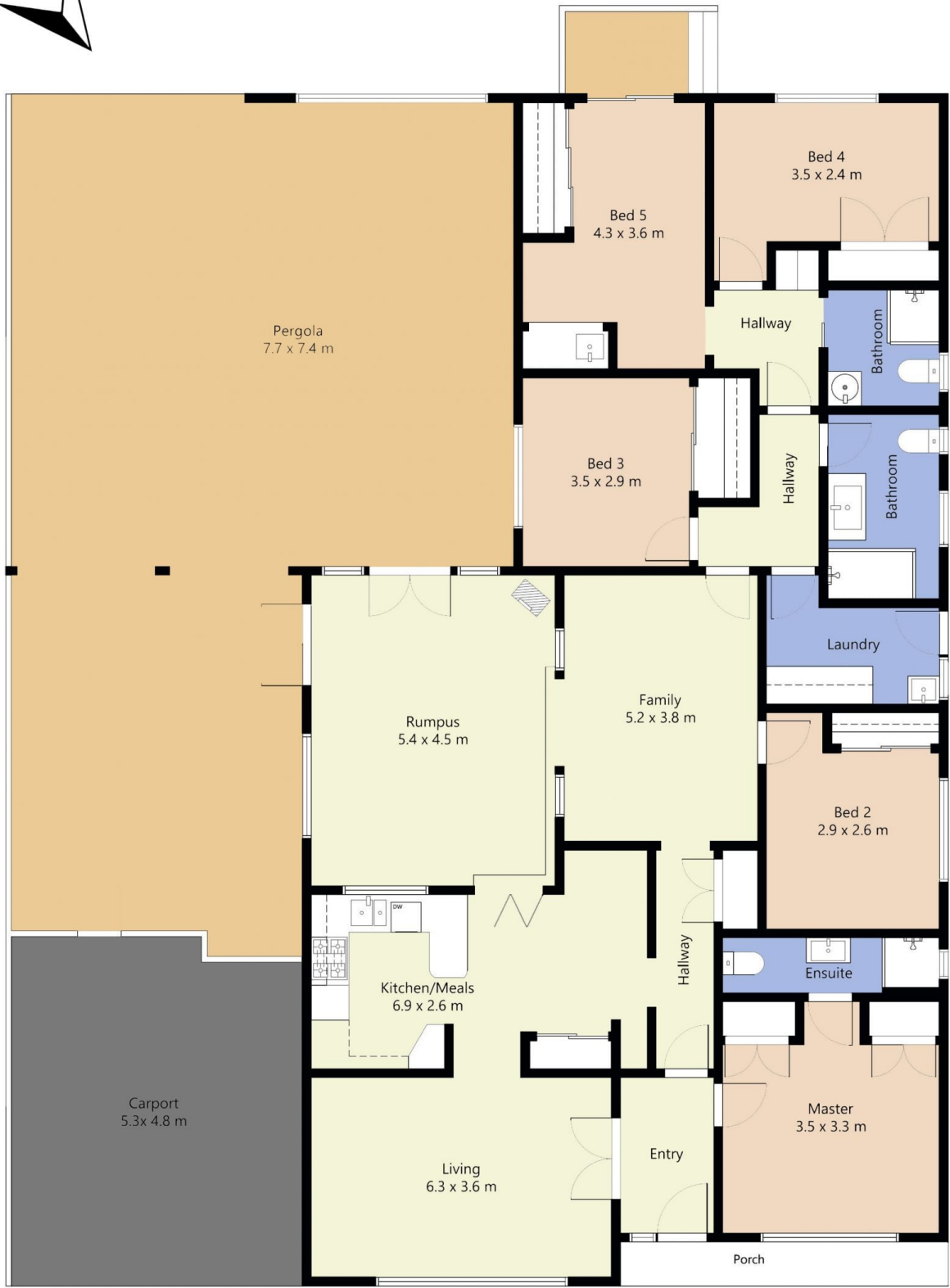
View : <https://www.ypa.com.au/7362029>



Petar Krnjeta
0406912320



Abdul Merabi
0424 263 506



FLOOR PLAN IS PROVIDED AS INDICATIVE LAYOUT ONLY, MEASUREMENTS ARE NOT AVAILABLE, FLOORPLAN IS NOT TO SCALE.
NO GUARANTEES PROVIDED ON ACCURACY

13 Oppy Crescent, Hoppers Crossing